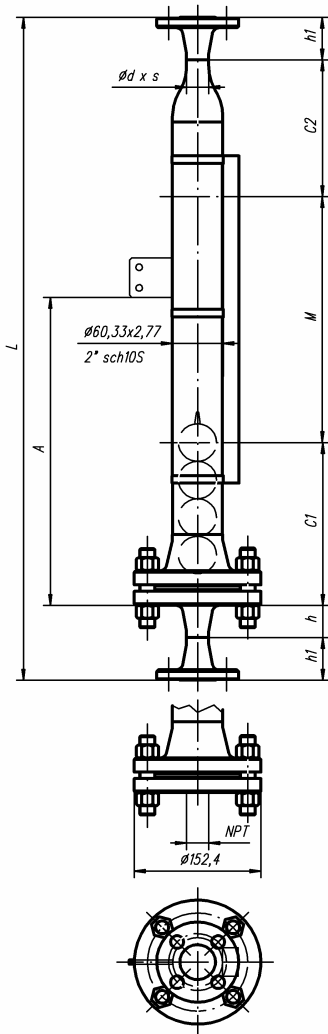


Visual Level Indicators (VLI) Petro

Series	Type	Material	Pipe O.D. x s (mm)	Operating Pressure	Operating Temperature	Page
Petro 20	39020-A	316/316L	60.33*2.77	max. 19.0 bar@ 20°C	-80...400°C	2
"	39020-B	"	"	"	"	3
"	39020-K	"	"	"	"	4
"	39020-O	"	"	"	"	5
Pressure Temperature Rating for Petro PN20						6
Petro 20 (low density)	39021-A	316/316L	73.03*3.05	max. 19.0 bar@ 20°C	-80...400°C	7
"	39021-B	"	"	"	"	8
"	39021-K	"	"	"	"	9
"	39021-O	"	"	"	"	10
Pressure Temperature Rating for Petro PN20						11
Petro 50	39050-A	316/316L	60.33*2.77	max. 49.6 bar@ 20°C	-80...400°C	12
"	39050-B	"	"	"	"	13
"	39050-K	"	"	"	"	14
"	39050-O	"	"	"	"	15
Pressure Temperature Rating for Petro PN50						16
Petro 50 (low density)	39051-A	316/316L	73.03*3.05	max. 49.6 bar@ 20°C	-80...400°C	17
"	39051-B	"	"	"	"	18
"	39051-K	"	"	"	"	19
"	39051-O	"	"	"	"	20
Pressure Temperature Rating for Petro PN50						21
Petro 68	39068-A	316/316L	60.33*2.77	max. 66.2 bar@ 20°C	-80...400°C	22
"	39068-B	"	"	"	"	23
"	39068-K	"	"	"	"	24
"	39068-O	"	"	"	"	25
Pressure Temperature Rating for Petro PN68						26
Petro 100	39100-A	316/316L	60.33*3.91	max. 98.6 bar@ 20°C	-80...400°C	27
"	39100-B	"	"	"	"	28
"	39100-K	"	"	"	"	29
"	39100-O	"	"	"	"	30
Pressure Temperature Rating for Petro PN100						31
Petro 150	39150-A	316/316L	60.33*3.91	max. 148.9 bar@ 20°C	-80...400°C	32
"	39150-B	"	"	"	"	33
"	39150-K	"	"	"	"	34
"	39150-O	"	"	"	"	35
Pressure Temperature Rating for Petro PN150						36
250-PN400 according to order						37
Specification Sheet for Petro Pressure Indicators						38
Accessoires						39



Float extension lower / upper:

	c1:	c2:
Standard:	200	170
On request:	c1, c2 shorter or longer, depending on float!	

Standard Connections:

- a) Butt weld ends, sch10S:
- | size | d*s | h |
|-----------------|------------|------|
| 1/2" i.e. DN15: | 21.34*2.11 | 36.6 |
| 3/4" i.e. DN20 | 26.67*2.11 | 39.6 |
| 1" i.e. DN25 | 33.40*2.77 | 41.4 |
- b) Flanged, ANSI B16.5:
- | | h1 |
|----------------|------|
| 1/2" i.e. DN15 | 47.8 |
| 3/4" i.e. DN20 | 52.3 |
| 1" i.e. DN25 | 55.6 |
- c) Female pipe threads:
- | | ANSI: |
|-----------------------|----------|
| - ISO 7-1/ ISO 228-1: | |
| Rp1/2" resp. G1/2" | NPT 1/2" |
| Rp3/4" resp. G3/4" | NPT 3/4" |
| Rp1" resp. G1" | NPT 1" |

*4) act position relative to the indication rail according to specification no. 20010501!

- all indicated dimension in "mm"!
All dimensions only available on VLI's in standard execution!
Modifications reserved.

Purchase Order Data:

Company:
 Purchase order no.:
 Project:
 Quantity: Tag no.:

Operating Conditions:

Fluid:
 Density: > 0.41g/cm3 g/cm3:
 Operating pressure: max. 19bar(g) @ 20 °C *1) bar(g):
 Design pressure: " bar(g):
 Operating temperature: -80 °C bis max. 400 °C *1) °C:
 Design temperature: " °C:

*1) Notice max. pressure-temperature rating! Lower temperature down to -162°C on request
 Lower pressure-temperature rating of any connecting flanges or fittings reserved!
 Test pressure will be specified according to WEKA specification "Pressure- and Temperature Information"

Design and Materials:

standard execution:
 Used pressure design rules: ANSI/ASME B31.3 - Chemical Plant & Petroleum Refinery Piping
 Float chamber: 316/316L double certified incl. NACE MR0175
 seamless pipe sch10S A-312, seamless butt weld fittings A-403
 forged wn-flanges and blinds A-182
 Float: Ti-alloy type no.:
 Stud bolt / Heavy hex nut: A-193 B8 Cl. 2 / A194 Grade 8, incl. NACE MR0175
 Spiral wound gasket: Profil SpV2, outside centering ring in ss316
 - plies ss316L wounded with PTFE, T<=200 °C Standard
 - plies ss316L wounded with Graphit, T<=400 °C

Indication Rail:

PC, cat.-no. 990805: Stand. Flaps: Red-Al nature No.: 34837 Standard
 Colour. flaps: No.:
 Al, cat.-no. 20010405: Colour. flaps: No.:

Connecting Distance "L":

Max. 6000mm (one-piece design) mm:

Standard Connections:

Butt weld ends O.D.*w.t. in mm:
 Flanged DN.../PN20 resp. class150:
 NPT female thread size:

Type and size to be advised in case of order! Note standard dimension available as indicated!

Other Connections:

Accessories:

Fixation bracket no. 26936: dimension "A", mm:

Magnetic switch *4):

type: quantity:

Transmitter *4):

type:
 signal output:
 measuring length:

Control unit:

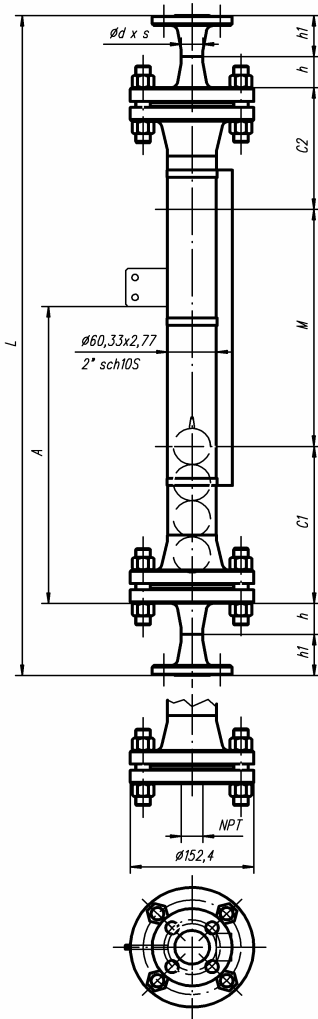
type:
 supply voltage, V: AC/DC:

Further accessories:

Optional:

Proofing of used materials according to EN10204-3.1B for float chamber:
 Heavy fixation for indication rail, specification no. 20010407 (vibrations, shock etc.)

Special Executions, Notes:



Float extension lower / upper:

	c1:	c2:
Standard:	200	150
On request:	c1, c2 shorter or longer, depending on float!	

Standard Connections:

- a) Butt weld ends, sch10S:

size	d*s	h
1/2" i.e. DN15:	21.34*2.11	36.6
3/4" i.e. DN20	26.67*2.11	39.6
1" i.e. DN25	33.40*2.77	41.4
- b) Flanged, ANSI B16.5:

	h1
1/2" i.e. DN15	47.8
3/4" i.e. DN20	52.3
1" i.e. DN25	55.6
- c) Female pipe threads:

	ANSI:
- ISO 7-1/ ISO 228-1:	
Rp1/2" resp. G1/2"	NPT 1/2"
Rp3/4" resp. G3/4"	NPT 3/4"
Rp1" resp. G1"	NPT 1"

*4) act position relative to the indication rail according to specification no. 20010501!

- all indicated dimension in "mm"!
All dimensions only available on VLI's in standard execution!
Modifications reserved.

Purchase Order Data:

Company:
 Purchase order no.:
 Project:
 Quantity: Tag no.:

Operating Conditions:

Fluid:
 Density: > 0.41g/cm3 g/cm3:
 Operating pressure: max. 19bar(g) @ 20 °C *1) bar(g):
 Design pressure: " bar(g):
 Operating temperature: -80 °C bis max. 400 °C *1) °C:
 Design temperature: " °C:

*1) Notice max. pressure-temperature rating! Lower temperature down to -162°C on request
 Lower pressure-temperature rating of any connecting flanges or fittings reserved!
 Test pressure will be specified according to WEKA specification "Pressure- and Temperature Information"

Design and Materials:

Used pressure design rules: standard execution: ANSI/ASME B31.3 - Chemical Plant & Petroleum Refinery Piping
 Float chamber: 316/316L double certified incl. NACE MR0175
 seamless pipe sch10S A-312, seamless butt weld fittings A-403
 forged wn-flanges and blinds A-182
 Float: Ti-alloy type no.:
 Stud bolt / Heavy hex nut: A-193 B8 Cl. 2 / A194 Grade 8, incl. NACE MR0175
 Spiral wound gasket: Profil SpV2, outside centering ring in ss316
 - plies ss316L wounded with PTFE, T<=200°C Standard
 - plies ss316L wounded with Graphit, T<=400°C

Indication Rail:

PC, cat.-no. 990805: Stand. Flaps: Red-Al nature No.: 34837 Standard
 Colour. flaps: No.:
 Al, cat.-no. 20010405: Colour. flaps: No.:

Connecting Distance "L":

Max. 6000mm (one-piece design) mm:

Standard Connections:

Butt weld ends O.D.*w.t. in mm:
 Flanged DN.../PN20 resp. class150:
 NPT female thread size:

Type and size to be advised in case of order! Note standard dimension available as indicated!

Other Connections:

Accessories:

Fixation bracket no. 26936: dimension "A", mm:

Magnetic switch *4):

type: quantity:

Transmitter *4):

type:
 signal output:

Control unit:

measuring length:
 type:
 supply voltage, V: AC/DC:

Further accessories:

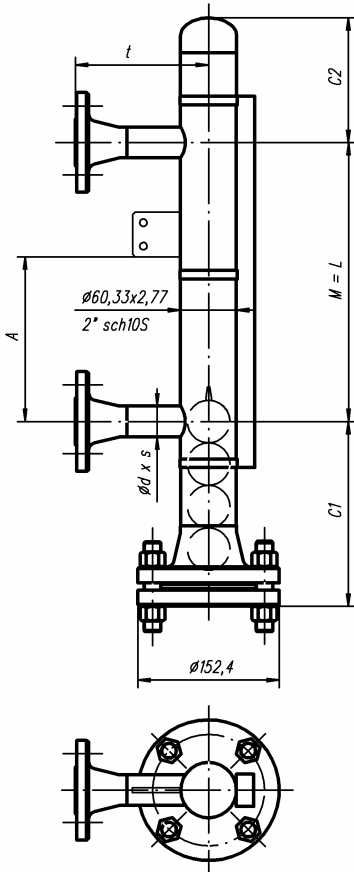
Optional:

Proofing of used materials according to EN10204-3.1B for float chamber:
 Heavy fixation for indication rail, specification no. 20010407 (vibrations, shock etc.)

Special Executions, Notes:

Petro 20

Type: 39020-K



Purchase Order Data:

Company: _____
 Purchase order no.: _____
 Project: _____
 Quantity: _____ Tag no.: _____

Operating Conditions:

Fluid: _____
 Density: > 0.41g/cm3 g/cm3: _____
 Operating pressure: max. 19bar(g) @ 20 °C *1) bar(g): _____
Design pressure: " bar(g): _____
 Operating temperature: -80 °C bis max. 400 °C *1) °C: _____
Design temperature: " °C: _____

*1) Notice max. pressure-temperature rating! Lower temperature down to -162°C on request
 Lower pressure-temperature rating of any connecting flanges or fittings reserved!
 Test pressure will be specified according to WEKA specification "Pressure- and Temperature Information"

Design and Materials:

standard execution:
 Used pressure design rules: ANSI/ASME B31.3 - Chemical Plant & Petroleum Refinery Piping
 Float chamber: 316/316L double certified incl. NACE MR0175
 seamless pipe sch10S A-312, seamless butt weld fittings A-403
 forged wn-flanges and blinds A-182
 Float: Ti-alloy type no.: _____
 Stud bolt / Heavy hex nut: A-193 B8 Cl. 2 / A194 Grade 8, incl. NACE MR0175
 Spiral wound gasket: Profil SpV2, outside centering ring in ss316
 - plies ss316L wounded with PTFE, T<=200 °C Standard
 - plies ss316L wounded with Graphit, T<=400 °C

Indication Rail:

PC, cat.-no. 990805: Stand. Flaps: Red-Al nature No.: 34837 Standard
 Colour. flaps: _____ No.: _____
 Al, cat.-no. 20010405: Colour. flaps: _____ No.: _____

Connecting Distance "L":

Max. 6000mm (one-piece design) mm: _____

Standard Connections:

Butt weld ends O.D.*w.t. in mm: _____
 Flanged DN.../PN20 resp. class150: _____
 NPT female thread size: _____

Type and size to be advised in case of order! Note standard dimension available as indicated!

Other Connections:

Float extension lower / upper:

	c1:	c2:
Standard:	200	150

On request: c1, c2 shorter or longer, depending on float!

Standard Flange Connections:

a) Connection branches, sch10S:

- PN20 resp. class150

size	t	d*s
1/2" i.e. DN15	150	21.34*2.11
3/4" i.e. DN20	150	26.67*2.11
1" i.e. DN25	150	33.40*2.77
>=1 1/4" i.e. DN32 *2)	tba *3)	33.40*2.77

Accessories:

Fixation bracket no. 26936: dimension "A", mm: _____

Magnetic switch *4):

type: _____ quantity: _____

Transmitter *4):

type: _____
 signal output: _____
 measuring length: _____
 type: _____
 supply voltage, V: _____ AC/DC: _____

Control unit:

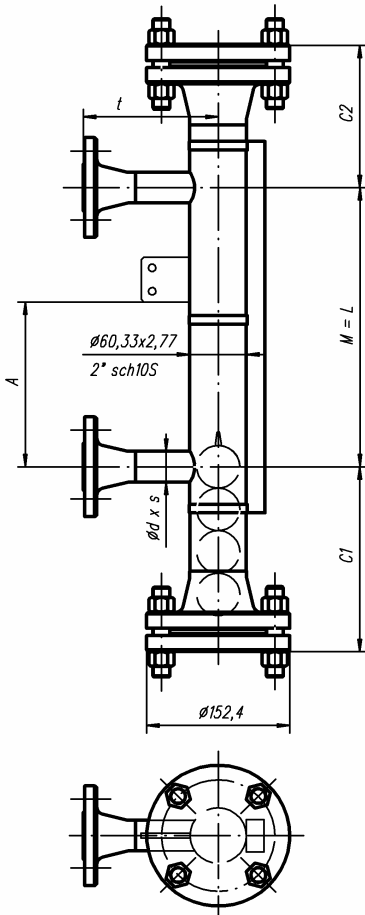
Further accessories:

Optional:

Proofing of used materials according to EN10204-3.1B for float chamber:
 Heavy fixation for indication rail, specification no. 20010407 (vibrations, shock etc.)

Special Executions, Notes:

*2) i.e. with reduction flanges
 *3) depending on size of connecting flanges
 *4) act position relative to the indication rail according to specification no. 20010501!
 - all indicated dimension in "mm"!
 All dimensions only available on VLI's in standard execution!
 Modifications reserved.



Purchase Order Data:

Company: _____
 Purchase order no.: _____
 Project: _____
 Quantity: _____ Tag no.: _____

Operating Conditions:

Fluid: _____
 Density: > 0.41g/cm3 g/cm3: _____
 Operating pressure: max. 19bar(g) @ 20 °C *1) bar(g): _____
Design pressure: " bar(g): _____
 Operating temperature: -80 °C bis max. 400 °C *1) °C: _____
Design temperature: " °C: _____

*1) Notice max. pressure-temperature rating! Lower temperature down to -162°C on request
 Lower pressure-temperature rating of any connecting flanges or fittings reserved!
 Test pressure will be specified according to WEKA specification "Pressure- and Temperature Information"

Design and Materials:

standard execution:
 Used pressure design rules: ANSI/ASME B31.3 - Chemical Plant & Petroleum Refinery Piping
 Float chamber: 316/316L double certified incl. NACE MR0175
 seamless pipe sch10S A-312, seamless butt weld fittings A-403
 forged wn-flanges and blinds A-182
 Float: Ti-alloy type no.: _____
 Stud bolt / Heavy hex nut: A-193 B8 Cl. 2 / A194 Grade 8, incl. NACE MR0175
 Spiral wound gasket: Profil SpV2, outside centering ring in ss316
 - plies ss316L wounded with PTFE, T<=200 °C Standard
 - plies ss316L wounded with Graphit, T<=400 °C

Indication Rail:

PC, cat.-no. 990805: Stand. Flaps: Red-Al nature No.: 34837 Standard
 Colour. flaps: _____ No.: _____
 Al, cat.-no. 20010405: Colour. flaps: _____ No.: _____

Connecting Distance "L":

Max. 6000mm (one-piece design) mm: _____

Standard Connections:

Butt weld ends O.D.*w.t. in mm: _____
 Flanged DN.../PN20 resp. class150: _____
 NPT female thread size: _____

Type and size to be advised in case of order! Note standard dimension available as indicated!

Other Connections:

Float extension lower / upper:

c1: c2:
 Standard: 200 150

On request: c1, c2 shorter or longer, depending on float!

Standard Flange Connections:

a) Connection branches, sch10S:

- PN20 resp. class150

size	t	d*s
1/2" i.e. DN15	150	21.34*2.11
3/4" i.e. DN20	150	26.67*2.11
1" i.e. DN25	150	33.40*2.77
>= 1 1/4" i.e. DN32 *2)	tba *3)	33.40*2.77

Accessories:

Fixation bracket no. 26936: dimension "A", mm: _____

Magnetic switch *4):

type: _____ quantity: _____

Transmitter *4):

type: _____
 signal output: _____
 measuring length: _____
 type: _____
 supply voltage, V: _____ AC/DC: _____

Control unit:

Further accessories:

Optional:

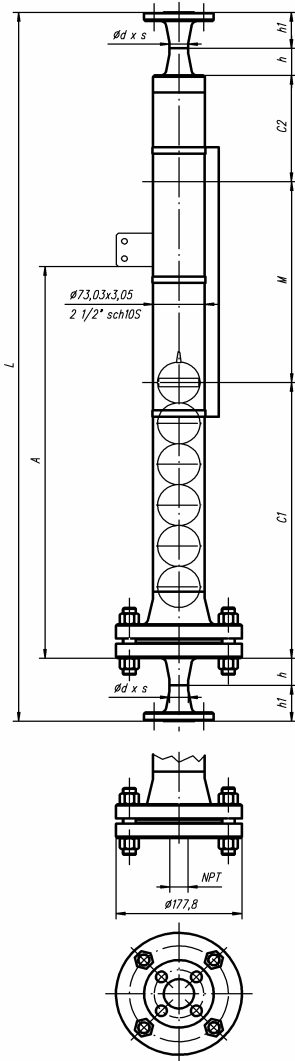
Proofing of used materials according to EN10204-3.1B for float chamber:
 Heavy fixation for indication rail, specification no. 20010407 (vibrations, shock etc.)

Special Executions, Notes:

*2) i.e. with reduction flanges
 *3) depending on size of connecting flanges
 *4) act position relative to the indication rail according to specification no. 20010501!
 - all indicated dimension in "mm"!
 All dimensions only available on VLI's in standard execution!
 Modifications reserved.

Petro 20 (Low density)

Type: 39021-A



Float extension lower / upper:

	c1:	c2:
Standard:	<= 400	160
On request:	c1, c2 shorter or longer, depending on float!	

Standard Connections:

a) Butt weld ends, sch10S:	size	d*s	h
	1/2" i.e. DN15:	21.34*2.11	36.6
	3/4" i.e. DN20	26.67*2.11	39.6
	1" i.e. DN25	33.40*2.77	41.4
b) Flanged, ANSI B16.5:			
- PN20 resp. class150			h1
	1/2" i.e. DN15		47.8
	3/4" i.e. DN20		52.3
	1" i.e. DN25		55.6
c) Female pipe threads:			
- ISO 7-1/ ISO 228-1:	ANSI:		
	Rp1/2" resp. G1/2"	NPT 1/2"	
	Rp3/4" resp. G3/4"	NPT 3/4"	
	Rp1" resp. G1"	NPT 1"	

*4) act position relative to the indication rail according to specification no. 20010501!

- all indicated dimension in "mm"!
All dimensions only available on VLI's in standard execution!
Modifications reserved.

Purchase Order Data:

Company:
 Purchase order no.:
 Project:
 Quantity: Tag no.:

Operating Conditions:

Fluid:
 Density: > 0.32g/cm3 g/cm3:
 Operating pressure: max. 19bar(g) @ 20 °C *1) bar(g):
 Design pressure: " bar(g):
 Operating temperature: -80 °C bis max. 400 °C *1) °C:
 Design temperature: " °C:

*1) Notice max. pressure-temperature rating! Lower temperature down to -162°C on request
 Lower pressure-temperature rating of any connecting flanges or fittings reserved!
 Test pressure will be specified according to WEKA specification "Pressure- and Temperature Information"

Design and Materials:

standard execution:
 Used pressure design rules: ANSI/ASME B31.3 - Chemical Plant & Petroleum Refinery Piping
 Float chamber: 316/316L double certified incl. NACE MR0175
 seamless pipe sch10S A-312, seamless butt weld fittings A-403
 forged wn-flanges and blinds A-182
 Float: Ti-alloy type no.:
 Stud bolt / Heavy hex nut: A-193 B8 Cl. 2 / A194 Grade 8, incl. NACE MR0175
 Spiral wound gasket: Profil SpV2, outside centering ring in ss316
 - plies ss316L wounded with PTFE, T<=200°C Standard
 - plies ss316L wounded with Graphit, T<=400°C

Indication Rail:

PC, cat.-no. 990805: Stand. Flaps: Red-Al nature No.: 34837 Standard
 Colour. flaps: No.:
 Al, cat.-no. 20010405: Colour. flaps: No.:

Connecting Distance "L":

Max. 6000mm (one-piece design) mm:

Standard Connections:

Butt weld ends O.D.*w.t. in mm:
 Flanged DN.../PN20 resp. class150:
 NPT female thread size:

Type and size to be advised in case of order! Note standard dimension available as indicated!

Other Connections:

Accessories:

Fixation bracket no. 26936: dimension "A", mm:

Magnetic switch *4):

type: quantity:

Transmitter *4):

type:
 signal output:
 measuring length:

Control unit:

type:
 supply voltage, V: AC/DC:

Further accessories:

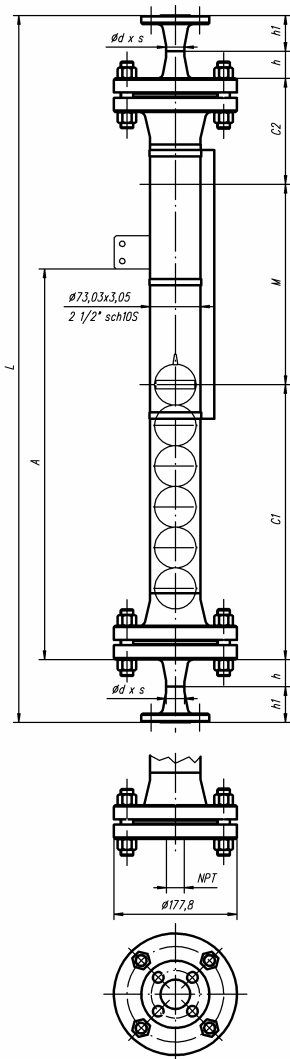
Optional:

Proofing of used materials according to EN10204-3.1B for float chamber:
 Heavy fixation for indication rail, specification no. 20010407 (vibrations, shock etc.)

Special Executions, Notes:

Petro 20 (Low density)

Type: 39021-B



Float extension lower / upper:

	c1:	c2:
Standard:	<= 400	160
On request:	c1, c2 shorter or longer, depending on float!	

Standard Connections:

a) Butt weld ends, sch10S:	size	d*s	h
	1/2" i.e. DN15:	21.34*2.11	36.6
	3/4" i.e. DN20	26.67*2.11	39.6
	1" i.e. DN25	33.40*2.77	41.4
b) Flanged, ANSI B16.5:			
- PN20 resp. class150			h1
	1/2" i.e. DN15		47.8
	3/4" i.e. DN20		52.3
	1" i.e. DN25		55.6
c) Female pipe threads:			
- ISO 7-1/ ISO 228-1:	ANSI:		
	Rp1/2" resp. G1/2"	NPT 1/2"	
	Rp3/4" resp. G3/4"	NPT 3/4"	
	Rp1" resp. G1"	NPT 1"	

*4) act position relative to the indication rail according to specification no. 20010501!
 - all indicated dimension in "mm"!
 All dimensions only available on VLI's in standard execution!
 Modifications reserved.

Purchase Order Data:

Company:
 Purchase order no.:
 Project:
 Quantity: Tag no.:

Operating Conditions:

Fluid:
 Density: > 0.32g/cm3 g/cm3:
 Operating pressure: max. 19bar(g) @ 20 °C *1) bar(g):
 Design pressure: " bar(g):
 Operating temperature: -80 °C bis max. 400 °C *1) °C:
 Design temperature: " °C:

*1) Notice max. pressure-temperature rating! Lower temperature down to -162°C on request
 Lower pressure-temperature rating of any connecting flanges or fittings reserved!
 Test pressure will be specified according to WEKA specification "Pressure- and Temperature Information"

Design and Materials:

standard execution:
 Used pressure design rules: ANSI/ASME B31.3 - Chemical Plant & Petroleum Refinery Piping
 Float chamber: 316/316L double certified incl. NACE MR0175
 seamless pipe sch10S A-312, seamless butt weld fittings A-403
 forged wn-flanges and blinds A-182
 Float: Ti-alloy type no.:
 Stud bolt / Heavy hex nut: A-193 B8 Cl. 2 / A194 Grade 8, incl. NACE MR0175
 Spiral wound gasket: Profil SpV2, outside centering ring in ss316
 - plies ss316L wounded with PTFE, T<=200°C Standard
 - plies ss316L wounded with Graphit, T<=400°C

Indication Rail:

PC, cat.-no. 990805: Stand. Flaps: Red-Al nature No.: 34837 Standard
 Colour. flaps: No.:
 Al, cat.-no. 20010405: Colour. flaps: No.:

Connecting Distance "L":

Max. 6000mm (one-piece design) mm:

Standard Connections:

Butt weld ends O.D.*w.t. in mm:
 Flanged DN.../PN20 resp. class150:
 NPT female thread size:

Type and size to be advised in case of order! Note standard dimension available as indicated!

Other Connections:

Accessories:

Fixation bracket no. 26936: dimension "A", mm:
 Magnetic switch *4): type: quantity:
 Transmitter *4): type:
 signal output:
 measuring length:
 Control unit: type:
 supply voltage, V: AC/DC:

Further accessories:

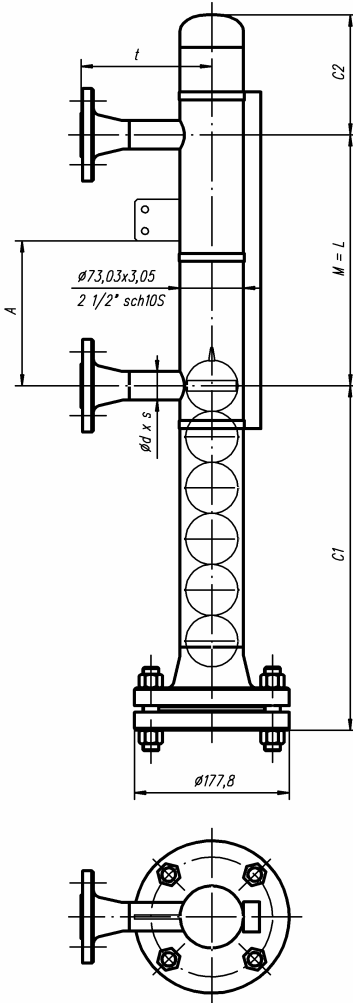
Optional:

Proofing of used materials according to EN10204-3.1B for float chamber:
 Heavy fixation for indication rail, specification no. 20010407 (vibrations, shock etc.):

Special Executions, Notes:

Petro 20 (Low density)

Type: 39021-K



Purchase Order Data:

Company:
 Purchase order no.:
 Project:
 Quantity: Tag no.:

Operating Conditions:

Fluid:
 Density: > 0.32g/cm3 g/cm3:
 Operating pressure: max. 19bar(g) @ 20 °C *1) bar(g):
 Design pressure: " bar(g):
 Operating temperature: -80 °C bis max. 400 °C *1) °C:
 Design temperature: " °C:

*1) Notice max. pressure-temperature rating! Lower temperature down to -162°C on request
 Lower pressure-temperature rating of any connecting flanges or fittings reserved!
 Test pressure will be specified according to WEKA specification "Pressure- and Temperature Information"

Design and Materials:

Used pressure design rules: standard execution: ANSI/ASME B31.3 - Chemical Plant & Petroleum Refinery Piping
 Float chamber: 316/316L double certified incl. NACE MR0175
 seamless pipe sch10S A-312, seamless butt weld fittings A-403
 forged wn-flanges and blinds A-182
 Float: Ti-alloy type no.:
 Stud bolt / Heavy hex nut: A-193 B8 Cl. 2 / A194 Grade 8, incl. NACE MR0175
 Spiral wound gasket: Profil SpV2, outside centering ring in ss316
 - plies ss316L wounded with PTFE, T<=200°C Standard
 - plies ss316L wounded with Graphit, T<=400°C

Indication Rail:

PC, cat.-no. 990805: Stand. Flaps: Red-Al nature No.: 34837 Standard
 Colour. flaps: No.:
 Al, cat.-no. 20010405: Colour. flaps: No.:

Connecting Distance "L": Max. 6000mm (one-piece design) mm:

Standard Connections: Butt weld ends O.D.*w.t. in mm:
 Flanged DN.../PN20 resp. class150:
 NPT female thread size:

Type and size to be advised in case of order! Note standard dimension available as indicated!

Other Connections:

Float extension lower / upper:

	c1:	c2:
Standard:	<= 400	150
On request:	c1, c2 shorter or longer, depending on float!	

Standard Flange Connections:

a) Connection branches, sch10S:

size	t	d*s
1/2" i.e. DN15	150	21.34*2.11
3/4" i.e. DN20	150	26.67*2.11
1" i.e. DN25	150	33.40*2.77
1 1/4" i.e. DN32	150	42.16*2.77
>=1 1/2" i.e. DN40 *2)	tba *3)	42.16*2.77

Accessories:

Fixation bracket no. 26936: dimension "A", mm:

Magnetic switch *4): type: quantity:

Transmitter *4): type:

signal output:

measuring length:

supply voltage, V: AC/DC:

Control unit:

Further accessories:

Optional:

Proofing of used materials according to EN10204-3.1B for float chamber:
 Heavy fixation for indication rail, specification no. 20010407 (vibrations, shock etc.)

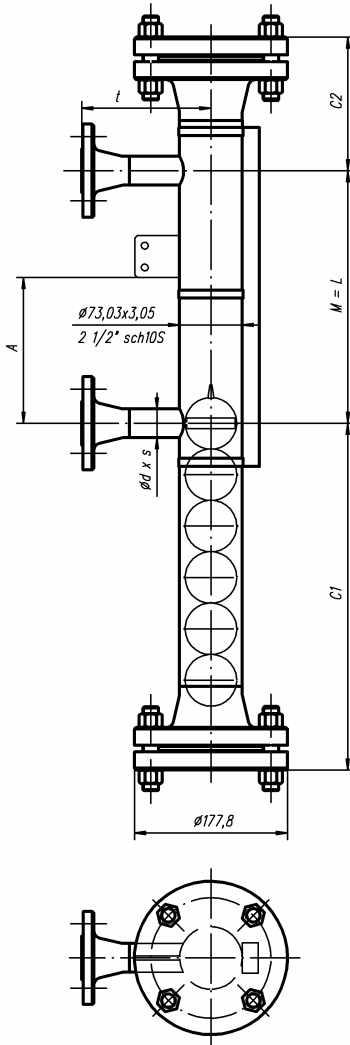
Special Executions, Notes:

*4) act position relative to the indication rail according to specification no. 20010501!

- all indicated dimension in "mm"
 All dimensions only available on VLI's in standard execution!
 Modifications reserved.

Petro 20 (Low density)

Type: 39021-O



Purchase Order Data:

Company:
 Purchase order no.:
 Project:
 Quantity: Tag no.:

Operating Conditions:

Fluid:
 Density: > 0.32g/cm3 g/cm3:
 Operating pressure: max. 19bar(g) @ 20 °C *1) bar(g):
 Design pressure: " bar(g):
 Operating temperature: -80 °C bis max. 400 °C *1) °C:
 Design temperature: " °C:

*1) Notice max. pressure-temperature rating! Lower temperature down to -162°C on request
 Lower pressure-temperature rating of any connecting flanges or fittings reserved!
 Test pressure will be specified according to WEKA specification "Pressure- and Temperature Information"

Design and Materials:

standard execution:
 Used pressure design rules: ANSI/ASME B31.3 - Chemical Plant & Petroleum Refinery Piping
 Float chamber: 316/316L double certified incl. NACE MR0175
 seamless pipe sch10S A-312, seamless butt weld fittings A-403
 forged wn-flanges and blinds A-182
 Float: Ti-alloy type no.:
 Stud bolt / Heavy hex nut: A-193 B8 Cl. 2 / A194 Grade 8, incl. NACE MR0175
 Spiral wound gasket: Profil SpV2, outside centering ring in ss316
 - plies ss316L wounded with PTFE, T<=200°C Standard
 - plies ss316L wounded with Graphit, T<=400°C

Indication Rail:

PC, cat.-no. 990805: Stand. Flaps: Red-Al nature No.: 34837 Standard
 Colour. flaps: No.:
 Al, cat.-no. 20010405: Colour. flaps: No.:

Connecting Distance "L":

Max. 6000mm (one-piece design) mm:

Standard Connections:

Butt weld ends O.D.*w.t. in mm:
 Flanged DN.../PN20 resp. class150:
 NPT female thread size:

Type and size to be advised in case of order! Note standard dimension available as indicated!

Other Connections:

Float extension lower / upper:

c1: c2:
 Standard: <= 400 160

On request: c1, c2 shorter or longer, depending on float!

Standard Flange Connections:

a) Connection branches, sch10S:
 - PN20 resp. class150

size	t	d*s
1/2" i.e. DN15	150	21.34*2.11
3/4" i.e. DN20	150	26.67*2.11
1" i.e. DN25	150	33.40*2.77
1 1/4" i.e. DN32	150	42.16*2.77
>=1 1/2" i.e. DN40 *2)	tba *3)	42.16*2.77

Accessories:

Fixation bracket no. 26936: dimension "A", mm:

Magnetic switch *4):

type: quantity:

Transmitter *4):

type:
 signal output:
 measuring length:
 type:
 supply voltage, V: AC/DC:

Control unit:

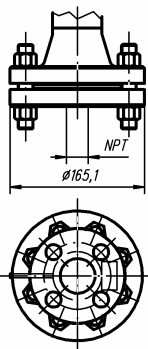
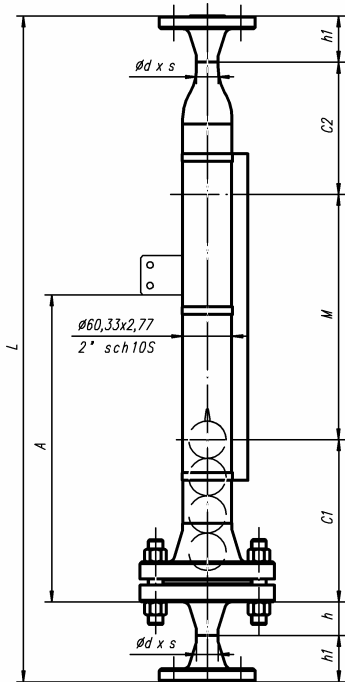
Further accessories:

Optional:

Proofing of used materials according to EN10204-3.1B for float chamber:
 Heavy fixation for indication rail, specification no. 20010407 (vibrations, shock etc.)

Special Executions, Notes:

*2) i.e. with reduction flanges
 *3) depending on size of connecting flanges
 *4) act position relative to the indication rail according to specification no. 20010501!
 - all indicated dimension in "mm"!
 All dimensions only available on VLI's in standard execution!
 Modifications reserved.



Float extension lower / upper:

c1: c2:
Standard: 200 170

On request: c1, c2 shorter or longer, depending on float!

Standard Connections:

a) Butt weld ends, sch10S:

size	d*s	h
1/2" i.e. DN15:	21.34*2.11	38.1
3/4" i.e. DN20	26.67*2.11	41.5
1" i.e. DN25	33.40*2.77	44.5

b) Flanged, ANSI B16.5:

- PN50 resp. class300		h1
1/2" i.e. DN15		52.3
3/4" i.e. DN20		57.2
1" i.e. DN25		62.0

c) Female pipe threads:

- ISO 7-1/ ISO 228-1:	ANSI:
Rp1/2" resp. G1/2"	NPT 1/2"
Rp3/4" resp. G3/4"	NPT 3/4"
Rp1" resp. G1"	NPT 1"

*4) act position relative to the indication rail according to specification no. 20010501!

- all indicated dimension in "mm"!

All dimensions only available on

VLI's in standard execution!

Modifications reserved.

Purchase Order Data:

Company:

Purchase order no.:

Project:

Quantity:

Tag no.:	

Operating Conditions:

Fluid:

Density:

Operating pressure:

Design pressure:

Operating temperature:

Design temperature:

> 0.41g/cm3	g/cm3:
max. 49.6bar(g) @ 20 °C *1)	bar(g):
"	bar(g):
-80 °C bis max. 400 °C *1)	°C:
"	°C:

*1) Notice max. pressure-temperature rating! Lower temperature down to -162°C on request

Lower pressure-temperature rating of any connecting flanges or fittings reserved!

Test pressure will be specified according to WEKA specification "Pressure- and Temperature Information"

Design and Materials:

Used pressure design rules:

Float chamber:

Float:

Stud bolt / Heavy hex nut:

Spiral wound gasket:

standard execution:

ANSI/ASME B31.3 - Chemical Plant & Petroleum Refinery Piping

316/316L double certified incl. NACE MR0175

seamless pipe sch10S A-312, seamless butt weld fittings A-403

forged wn-flanges and blinds A-182

Ti-alloy type no.:

A-193 B8 Cl. 2 / A194 Grade 8, incl. NACE MR0175

Profil SpV2, outside centering ring in ss316

- plies ss316L wounded with PTFE, T<=200°C

- plies ss316L wounded with Graphit, T<=400°C

Standard

Indication Rail:

PC, cat.-no. 990805:

Al, cat.-no. 20010405:

Stand. Flaps: Red-Al nature

No.: 34837

Standard

Colour. flaps:

No.:

Colour. flaps:

No.:

Connecting Distance "L":

Max. 6000mm (one-piece design)

mm:

Standard Connections:

Butt weld ends

O.D.*w.t. in mm:

Flanged DN.../PN50 resp. class300:

NPT female thread

size:

Type and size to be advised in case of order! Note standard dimension available as indicated!

Other Connections:

--	--

Accessories:

Fixation bracket no. 26936:

dimension "A", mm:

Magnetic switch *4):

type:

quantity:

Transmitter *4):

type:

signal output:

measuring length:

Control unit:

type:

supply voltage, V:

AC/DC:

Further accessories:

--	--

Optional:

Proofing of used materials according to EN10204-3.1B for float chamber:

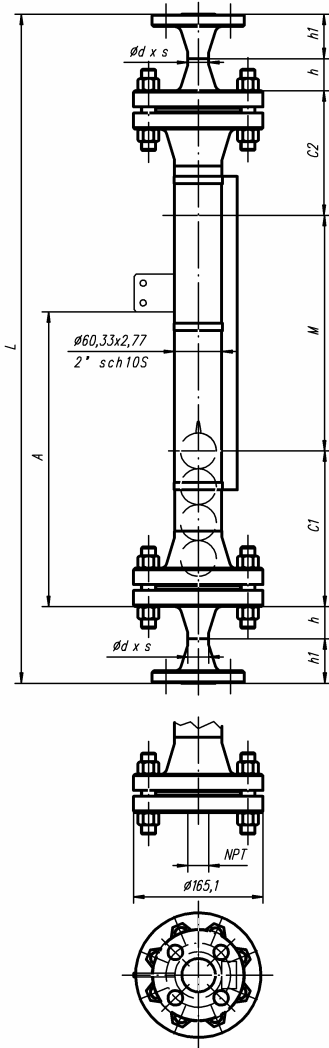
Heavy fixation for indication rail, specification no. 20010407 (vibrations, shock etc.)

Special Executions, Notes:

--	--

Petro 50

Type: 39050-B



Float extension lower / upper:

	c1:	c2:
Standard:	200	160
On request:	c1, c2 shorter or longer, depending on float!	

Standard Connections:

- a) Butt weld ends, sch10S:

size	d*s	h
1/2" i.e. DN15:	21.34*2.11	38.1
3/4" i.e. DN20	26.67*2.11	41.5
1" i.e. DN25	33.40*2.77	44.5
- b) Flanged, ANSI B16.5:

	h1
- PN50 resp. class300	52.3
1/2" i.e. DN15	57.2
3/4" i.e. DN20	62.0
1" i.e. DN25	
- c) Female pipe threads:

	ANSI:
- ISO 7-1/ ISO 228-1:	NPT 1/2"
Rp1/2" resp. G1/2"	NPT 3/4"
Rp3/4" resp. G3/4"	NPT 1"
Rp1" resp. G1"	

*4) act position relative to the indication rail according to specification no. 20010501!
 - all indicated dimension in "mm"!
 All dimensions only available on VLI's in standard execution!
 Modifications reserved.

Purchase Order Data:

Company:
 Purchase order no.:
 Project:
 Quantity: Tag no.:

Operating Conditions:

Fluid:
 Density: > 0.41g/cm3 g/cm3:
 Operating pressure: max. 49.6bar(g) @ 20 °C *1) bar(g):
 Design pressure: " bar(g):
 Operating temperature: -80 °C bis max. 400 °C *1) °C:
 Design temperature: " °C:

*1) Notice max. pressure-temperature rating! Lower temperature down to -162°C on request
 Lower pressure-temperature rating of any connecting flanges or fittings reserved!
 Test pressure will be specified according to WEKA specification "Pressure- and Temperature Information"

Design and Materials:

standard execution:
 Used pressure design rules: ANSI/ASME B31.3 - Chemical Plant & Petroleum Refinery Piping
 Float chamber: 316/316L double certified incl. NACE MR0175
 seamless pipe sch10S A-312, seamless butt weld fittings A-403
 forged wn-flanges and blinds A-182
 Float: Ti-alloy type no.:
 Stud bolt / Heavy hex nut: A-193 B8 Cl. 2 / A194 Grade 8, incl. NACE MR0175
 Spiral wound gasket: Profil SpV2, outside centering ring in ss316
 - plies ss316L wounded with PTFE, T<=200 °C Standard
 - plies ss316L wounded with Graphit, T<=400 °C

Indication Rail:

PC, cat.-no. 990805: Stand. Flaps: Red-Al nature No.: 34837 Standard
 Colour. flaps: No.:
 Al, cat.-no. 20010405: Colour. flaps: No.:

Connecting Distance "L":

Max. 6000mm (one-piece design) mm:

Standard Connections:

Butt weld ends O.D.*w.t. in mm:
 Flanged DN.../PN50 resp. class300:
 NPT female thread size:

Type and size to be advised in case of order! Note standard dimension available as indicated!

Other Connections:

Accessories:

Fixation bracket no. 26936: dimension "A", mm:

Magnetic switch *4):

type: quantity:

Transmitter *4):

type:
 signal output:
 measuring length:

Control unit:

type:
 supply voltage, V: AC/DC:

Further accessories:

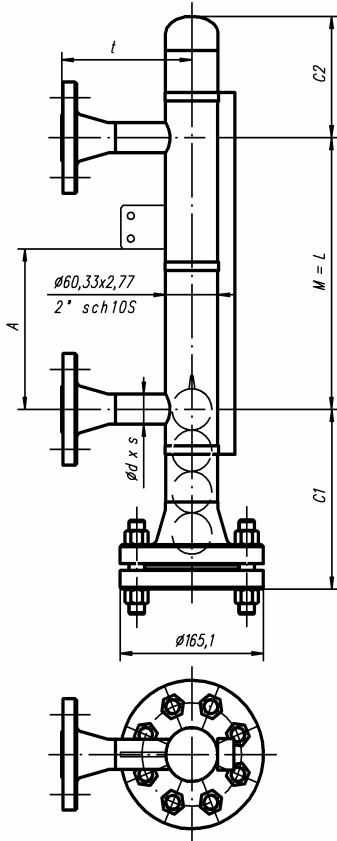
Optional:

Proofing of used materials according to EN10204-3.1B for float chamber:
 Heavy fixation for indication rail, specification no. 20010407 (vibrations, shock etc.)

Special Executions, Notes:

Petro 50

Type: 39050-K



Purchase Order Data:

Company: _____
 Purchase order no.: _____
 Project: _____
 Quantity: _____ Tag no.: _____

Operating Conditions:

Fluid: _____
 Density: > 0.41g/cm3 g/cm3: _____
 Operating pressure: max. 49.6bar(g) @ 20 °C *1) bar(g): _____
 Design pressure: " bar(g): _____
 Operating temperature: -80 °C bis max. 400 °C *1) °C: _____
 Design temperature: " °C: _____

*1) Notice max. pressure-temperature rating! Lower temperature down to -162°C on request
 Lower pressure-temperature rating of any connecting flanges or fittings reserved!
 Test pressure will be specified according to WEKA specification "Pressure- and Temperature Information"

Design and Materials:

standard execution:
 Used pressure design rules: ANSI/ASME B31.3 - Chemical Plant & Petroleum Refinery Piping
 Float chamber: 316/316L double certified incl. NACE MR0175
 seamless pipe sch10S A-312, seamless butt weld fittings A-403
 forged wn-flanges and blinds A-182
 Float: Ti-alloy type no.: _____
 Stud bolt / Heavy hex nut: A-193 B8 Cl. 2 / A194 Grade 8, incl. NACE MR0175
 Spiral wound gasket: Profil SpV2, outside centering ring in ss316
 - plies ss316L wounded with PTFE, T<=200 °C Standard
 - plies ss316L wounded with Graphit, T<=400 °C

Indication Rail:

PC, cat.-no. 990805: Stand. Flaps: Red-Al nature No.: 34837 Standard
 Colour. flaps: _____ No.: _____
 Al, cat.-no. 20010405: Colour. flaps: _____ No.: _____

Connecting Distance "L":

Max. 6000mm (one-piece design) mm: _____

Standard Connections:

Butt weld ends O.D.*w.t. in mm: _____
 Flanged DN.../PN50 resp. class300: _____
 NPT female thread size: _____

Type and size to be advised in case of order! Note standard dimension available as indicated!

Other Connections:

Float extension lower / upper:

	c1:	c2:
Standard:	200	150

On request: c1, c2 shorter or longer, depending on float!

Standard Flange Connections:

a) Connection branches, sch10S:

- PN50 resp. class300

size	t	d*s
1/2" i.e. DN15	150	21.34*2.11
3/4" i.e. DN20	150	26.67*2.11
1" i.e. DN25	150	33.40*2.77
>=1 1/4" i.e. DN32 *2)	tba *3)	33.40*2.77

Accessories:

Fixation bracket no. 26936: dimension "A", mm: _____

Magnetic switch *4):

type: _____ quantity: _____

Transmitter *4):

type: _____
 signal output: _____
 measuring length: _____
 type: _____
 supply voltage, V: _____ AC/DC: _____

Control unit:

Further accessories:

Optional:

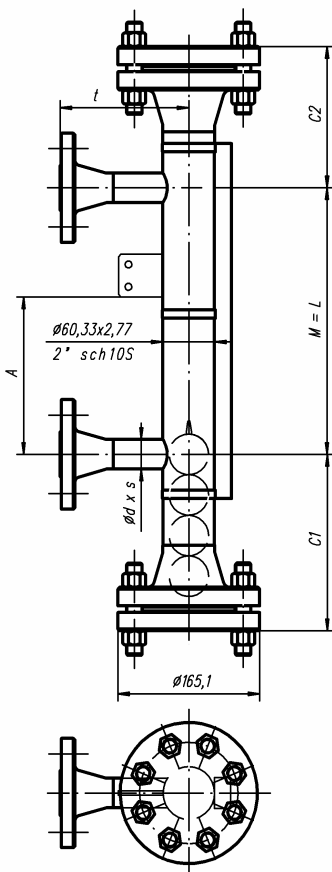
Proofing of used materials according to EN10204-3.1B for float chamber:
 Heavy fixation for indication rail, specification no. 20010407 (vibrations, shock etc.)

Special Executions, Notes:

*2) i.e. with reduction flanges
 *3) depending on size of connecting flanges
 *4) act position relative to the indication rail according to specification no. 20010501!
 - all indicated dimension in "mm"!
 All dimensions only available on VLI's in standard execution!
 Modifications reserved.

Petro 50

Type: 39050-O



Purchase Order Data:

Company: _____
 Purchase order no.: _____
 Project: _____
 Quantity: _____ Tag no.: _____

Operating Conditions:

Fluid: _____
 Density: > 0.41g/cm3 g/cm3: _____
 Operating pressure: max. 49.6bar(g) @ 20 °C *1) bar(g): _____
Design pressure: " bar(g): _____
 Operating temperature: -80 °C bis max. 400 °C *1) °C: _____
Design temperature: " °C: _____

*1) Notice max. pressure-temperature rating! Lower temperature down to -162°C on request
 Lower pressure-temperature rating of any connecting flanges or fittings reserved!
 Test pressure will be specified according to WEKA specification "Pressure- and Temperature Information"

Design and Materials:

standard execution:
 Used pressure design rules: ANSI/ASME B31.3 - Chemical Plant & Petroleum Refinery Piping
 Float chamber: 316/316L double certified incl. NACE MR0175
 seamless pipe sch10S A-312, seamless butt weld fittings A-403
 forged wn-flanges and blinds A-182
 Float: Ti-alloy type no.: _____
 Stud bolt / Heavy hex nut: A-193 B8 Cl. 2 / A194 Grade 8, incl. NACE MR0175
 Spiral wound gasket: Profil SpV2, outside centering ring in ss316
 - plies ss316L wounded with PTFE, T<=200 °C Standard
 - plies ss316L wounded with Graphit, T<=400 °C

Indication Rail:

PC, cat.-no. 990805: Stand. Flaps: Red-Al nature No.: 34837 Standard
 Colour. flaps: _____ No.: _____
 Al, cat.-no. 20010405: Colour. flaps: _____ No.: _____

Connecting Distance "L": Max. 6000mm (one-piece design) mm: _____

Standard Connections: Butt weld ends O.D.*w.t. in mm: _____
 Flanged DN.../PN50 resp. class300: _____
 NPT female thread size: _____

Type and size to be advised in case of order! Note standard dimension available as indicated!

Other Connections: _____

Float extension lower / upper:

	c1:	c2:
Standard:	200	160

On request: c1, c2 shorter or longer, depending on float!

Standard Flange Connections:

a) Connection branches, sch10S:

- PN50 resp. class300

size	t	d*s
1/2" i.e. DN15	150	21.34*2.11
3/4" i.e. DN20	150	26.67*2.11
1" i.e. DN25	150	33.40*2.77

>=1 1/4" i.e. DN32 *2)	tba *3)	33.40*2.77
------------------------	---------	------------

Accessories:

Fixation bracket no. 26936: dimension "A", mm: _____

Magnetic switch *4): type: _____ quantity: _____

Transmitter *4): type: _____

signal output: _____

measuring length: _____

supply voltage, V: type: _____

AC/DC: _____

Control unit:

Further accessories: _____

*2) i.e. with reduction flanges

*3) depending on size of connecting

*4) act position relative to the indica according to specification no. 201

- all indicated dimension in "mm"!

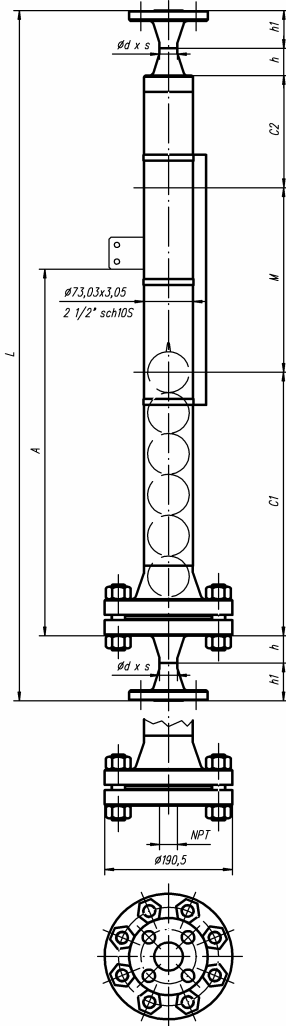
All dimensions only availab

VLI's in standard execution

Modifications reserved.

Petro 50 (Low density)

Type: 39051-A



Purchase Order Data:

Company:

Purchase order no.:

Project:

Quantity: Tag no.:

Operating Conditions:

Fluid:

Density: > 0.32g/cm3 g/cm3

Operating pressure: max. 49.6bar(g) @ 20 °C *1) bar(g)

Design pressure: " bar(g)

Operating temperature: -80 °C bis max. 400 °C *1) °C

Design temperature: " °C

*1) Notice max. pressure-temperature rating! Lower temperature down to -162°C on request
 Lower pressure-temperature rating of any connecting flanges or fittings reserved!
 Test pressure will be specified according to WEKA specification "Pressure- and Temperature Information"

Design and Materials:

Used pressure design rules: standard execution: ANSI/ASME B31.3 - Chemical Plant & Petroleum Refinery Piping

Float chamber: 316/316L double certified incl. NACE MR0175
 seamless pipe sch10S A-312, seamless butt weld fittings A-403
 forged wn-flanges and blinds A-182

Float: Ti-alloy type no.:

Stud bolt / Heavy hex nut: A-193 B8 Cl. 2 / A194 Grade 8, incl. NACE MR0175

Spiral wound gasket: Profil SpV2, outside centering ring in ss316
 - plies ss316L wounded with PTFE, T<=200°C Standard
 - plies ss316L wounded with Graphit, T<=400°C

Indication Rail:

PC, cat.-no. 990805: Stand. Flaps: Red-Al nature No.: 34837 Standard

Colour. flaps: No.:

Al, cat.-no. 20010405: Colour. flaps: No.:

Connecting Distance "L":

Max. 6000mm (one-piece design) mm:

Standard Connections:

Butt weld ends O.D.*w.t. in mm:

Flanged DN.../PN50 resp. class300:

NPT female thread size:

Type and size to be advised in case of order! Note standard dimension available as indicated!

Other Connections:

Float extension lower / upper:

	c1:	c2:
Standard:	< 400	160
On request:	c1, c2 shorter or longer, depending on float!	

Standard Connections:

a) Butt weld ends, sch10S:

size	d*s	h
1/2" i.e. DN15	21.34*2.11	38.1
3/4" i.e. DN20	26.67*2.11	41.5
1" i.e. DN25	33.40*2.77	44.5

b) Flanged, ANSI B16.5:

	h1
- PN50 resp. class300	h1
1/2" i.e. DN15	52.3
3/4" i.e. DN20	57.2
1" i.e. DN25	62.0

c) Female pipe threads:

	ANSI:
- ISO 7-1/ ISO 228-1:	ANSI:
Rp1/2" resp. G1/2"	NPT 1/2"
Rp3/4" resp. G3/4"	NPT 3/4"
Rp1" resp. G1"	NPT 1"

*4) act position relative to the indication rail according to specification no. 20010501!

- all indicated dimension in "mm"!

All dimensions only available on

VLI's in standard execution!

Modifications reserved.

Accessories:

Fixation bracket no. 26936: dimension "A", mm:

Magnetic switch *4):

type: quantity:

Transmitter *4):

type:

signal output:

measuring length:

Control unit:

type:

supply voltage, V: AC/DC:

Further accessories:

Optional:

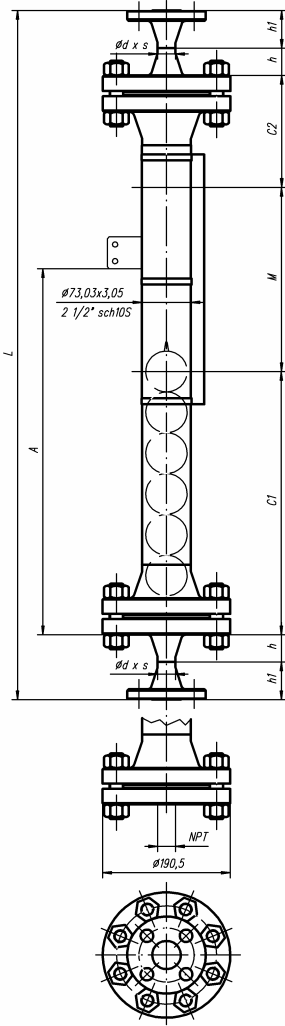
Proofing of used materials according to EN10204-3.1B for float chamber:

Heavy fixation for indication rail, specification no. 20010407 (vibrations, shock etc.):

Special Executions, Notes:

Petro 50 (Low density)

Type: 39051-B



Purchase Order Data:

Company:
 Purchase order no.:
 Project:
 Quantity: Tag no.:

Operating Conditions:

Fluid:
 Density: > 0.32g/cm3 g/cm3:
 Operating pressure: max. 49.6bar(g) @ 20 °C *1) bar(g):
 Design pressure: " bar(g):
 Operating temperature: -80 °C bis max. 400 °C *1) °C:
 Design temperature: " °C:

*1) Notice max. pressure-temperature rating! Lower temperature down to -162°C on request
 Lower pressure-temperature rating of any connecting flanges or fittings reserved!
 Test pressure will be specified according to WEKA specification "Pressure- and Temperature Information"

Design and Materials:

standard execution:
 Used pressure design rules: ANSI/ASME B31.3 - Chemical Plant & Petroleum Refinery Piping
 Float chamber: 316/316L double certified incl. NACE MR0175
 seamless pipe sch10S A-312, seamless butt weld fittings A-403
 forged wn-flanges and blinds A-182
 Float: Ti-alloy type no.:
 Stud bolt / Heavy hex nut: A-193 B8 Cl. 2 / A194 Grade 8, incl. NACE MR0175
 Spiral wound gasket: Profil SpV2, outside centering ring in ss316
 - plies ss316L wounded with PTFE, T<=200°C Standard
 - plies ss316L wounded with Graphit, T<=400°C

Indication Rail:

PC, cat.-no. 990805: Stand. Flaps: Red-Al nature No.: 34837 Standard
 Colour. flaps: No.:
 Al, cat.-no. 20010405: Colour. flaps: No.:

Connecting Distance "L":

Max. 6000mm (one-piece design) mm:

Standard Connections:

Butt weld ends O.D.*w.t. in mm:
 Flanged DN.../PN50 resp. class300:
 NPT female thread size:

Type and size to be advised in case of order! Note standard dimension available as indicated!

Other Connections:

Float extension lower / upper:

	c1:	c2:
Standard:	< 400	170
On request:	c1, c2 shorter or longer, depending on float!	

Standard Connections:

a) Butt weld ends, sch10S:

size	d*s	h
1/2" i.e. DN15	21.34*2.11	38.1
3/4" i.e. DN20	26.67*2.11	41.5
1" i.e. DN25	33.40*2.77	44.5

b) Flanged, ANSI B16.5:

	h1
- PN50 resp. class300	h1
1/2" i.e. DN15	52.3
3/4" i.e. DN20	57.2
1" i.e. DN25	62.0

c) Female pipe threads:

	ANSI:
- ISO 7-1/ ISO 228-1:	ANSI:
Rp1/2" resp. G1/2"	NPT 1/2"
Rp3/4" resp. G3/4"	NPT 3/4"
Rp1" resp. G1"	NPT 1"

*4) act position relative to the indication rail according to specification no. 20010501!

- all indicated dimension in "mm"!

All dimensions only available on

VLI's in standard execution!

Modifications reserved.

Accessories:

Fixation bracket no. 26936: dimension "A", mm:

Magnetic switch *4):

type: quantity:

Transmitter *4):

type:
 signal output:

Control unit:

measuring length:
 type:
 supply voltage, V: AC/DC:

Further accessories:

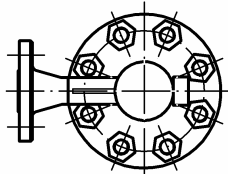
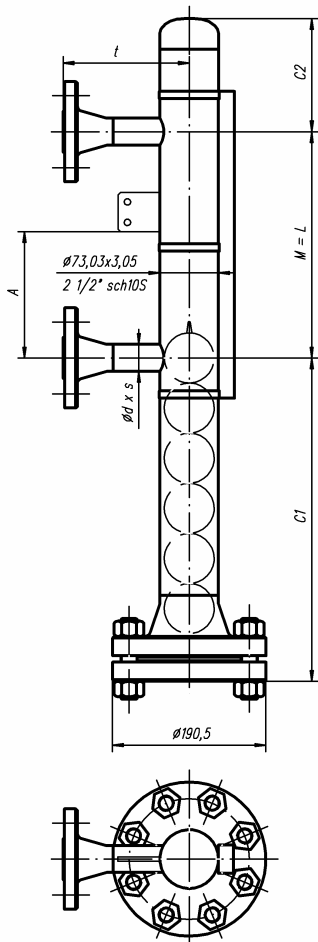
Optional:

Proofing of used materials according to EN10204-3.1B for float chamber:
 Heavy fixation for indication rail, specification no. 20010407 (vibrations, shock etc.)

Special Executions, Notes:

Petro 50 (Low density)

Type: 39051-K



Purchase Order Data:

Company:
 Purchase order no.:
 Project:
 Quantity: Tag no.:

Operating Conditions:

Fluid:
 Density: > 0.32g/cm3 g/cm3:
 Operating pressure: max. 49.6bar(g) @ 20 °C *1) bar(g):
 Design pressure: " bar(g):
 Operating temperature: -80 °C bis max. 400 °C *1) °C:
 Design temperature: " °C:

*1) Notice max. pressure-temperature rating! Lower temperature down to -162°C on request
 Lower pressure-temperature rating of any connecting flanges or fittings reserved!
 Test pressure will be specified according to WEKA specification "Pressure- and Temperature Information"

Design and Materials:

standard execution:
 Used pressure design rules: ANSI/ASME B31.3 - Chemical Plant & Petroleum Refinery Piping
 Float chamber: 316/316L double certified incl. NACE MR0175
 seamless pipe sch10S A-312, seamless butt weld fittings A-403
 forged wn-flanges and blinds A-182
 Float: Ti-alloy type no.:
 Stud bolt / Heavy hex nut: A-193 B8 Cl. 2 / A194 Grade 8, incl. NACE MR0175
 Spiral wound gasket: Profil SpV2, outside centering ring in ss316
 - plies ss316L wounded with PTFE, T<=200°C Standard
 - plies ss316L wounded with Graphit, T<=400°C

Indication Rail:

PC, cat.-no. 990805: Stand. Flaps: Red-Al nature No.: 34837 Standard
 Colour. flaps: No.:
 Al, cat.-no. 20010405: Colour. flaps: No.:

Connecting Distance "L":

Max. 6000mm (one-piece design) mm:

Standard Connections:

Butt weld ends O.D.*w.t. in mm:
 Flanged DN.../PN50 resp. class300:
 NPT female thread size:

Type and size to be advised in case of order! Note standard dimension available as indicated!

Other Connections:

Float extension lower / upper:

	c1:	c2:
Standard:	< 400	150
On request:	c1, c2 shorter or longer, depending on float!	

Standard Flange Connections:

a) Connection branches, sch10S:

- PN50 resp. class300

size	t	d*s
1/2" i.e. DN15	150	21.34*2.11
3/4" i.e. DN20	150	26.67*2.11
1" i.e. DN25	150	33.40*2.77
1 1/4" i.e. DN32	150	42.16*2.77
>=1 1/2" i.e. DN40 *2)	tba *3)	42.16*2.77

Accessories:

Fixation bracket no. 26936: dimension "A", mm:

Magnetic switch *4):

type: quantity:

Transmitter *4):

type:
 signal output:
 measuring length:
 type:
 supply voltage, V: AC/DC:

Control unit:

Further accessories:

Optional:

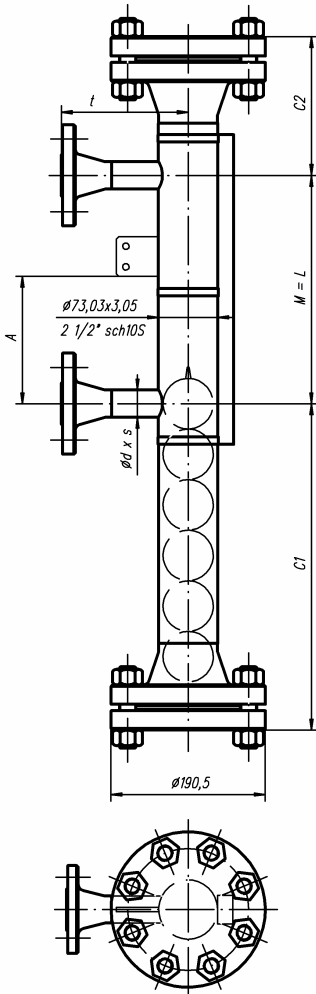
Proofing of used materials according to EN10204-3.1B for float chamber:
 Heavy fixation for indication rail, specification no. 20010407 (vibrations, shock etc.)

Special Executions, Notes:

*2) i.e. with reduction flanges
 *3) depending on size of connecting flanges
 *4) act position relative to the indication rail according to specification no. 20010501!
 - all indicated dimension in "mm"
 All dimensions only available on VLI's in standard execution!
 Modifications reserved.

Petro 50 (Low density)

Type: 39051-O



Purchase Order Data:

Company:
 Purchase order no.:
 Project:
 Quantity: Tag no.:

Operating Conditions:

Fluid:
 Density: > 0.32g/cm3 g/cm3:
 Operating pressure: max. 49.6bar(g) @ 20 °C *1) bar(g):
 Design pressure: " bar(g):
 Operating temperature: -80 °C bis max. 400 °C *1) °C:
 Design temperature: " °C:

*1) Notice max. pressure-temperature rating! Lower temperature down to -162°C on request
 Lower pressure-temperature rating of any connecting flanges or fittings reserved!
 Test pressure will be specified according to WEKA specification "Pressure- and Temperature Information"

Design and Materials:

standard execution:
 Used pressure design rules: ANSI/ASME B31.3 - Chemical Plant & Petroleum Refinery Piping
 Float chamber: 316/316L double certified incl. NACE MR0175
 seamless pipe sch10S A-312, seamless butt weld fittings A-403
 forged wn-flanges and blinds A-182
 Float: Ti-alloy type no.:
 Stud bolt / Heavy hex nut: A-193 B8 Cl. 2 / A194 Grade 8, incl. NACE MR0175
 Spiral wound gasket: Profil SpV2, outside centering ring in ss316
 - plies ss316L wounded with PTFE, T<=200 °C Standard
 - plies ss316L wounded with Graphit, T<=400 °C

Indication Rail:

PC, cat.-no. 990805: Stand. Flaps: Red-Al nature No.: 34837 Standard
 Colour. flaps: No.:
 Al, cat.-no. 20010405: Colour. flaps: No.:

Connecting Distance "L": Max. 6000mm (one-piece design) mm:

Standard Connections: Butt weld ends O.D.*w.t. in mm:
 Flanged DN.../PN50 resp. class300:
 NPT female thread size:

Type and size to be advised in case of order! Note standard dimension available as indicated!

Other Connections:

Float extension lower / upper:

	c1:	c2:
Standard:	< 400	170
On request:	c1, c2 shorte depending o	

Standard Flange Connect

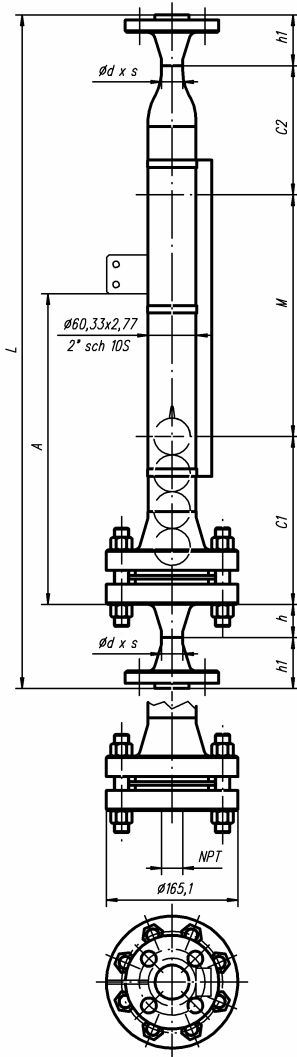
a) Connection branches, sch1
 - PN50 resp. class300

size	t
1/2" i.e. DN15	150
3/4" i.e. DN20	150
1" i.e. DN25	150
1 1/4" i.e. DN32	150
>=1 1/2" i.e. DN40 *2)	tba *3)

Accessories:

Fixation bracket no. 26936: dimension "A", mm:

*2) i.e. with reduction flanges
 *3) depending on size of connecting
 *4) act position relative to the indica according to specification no. 200
 - all indicated dimension in "mm"
 All dimensions only availab
 VLI's in standard execution
 Modifications reserved.



Float extension lower / upper:

c1: c2:
Standard: 220 170

On request: c1, c2 shorter or longer, depending on float!

Standard Connections:

a) Butt weld ends, sch10S:

size	d*s	h
1/2" i.e. DN15	21.34*2.11	38.1
3/4" i.e. DN20	26.67*2.11	41.5
1" i.e. DN25	33.40*2.77	44.5

b) Flanged, ANSI B16.5:

- PN100 resp. class600	h1
1/2" i.e. DN15	58.7
3/4" i.e. DN20	63.6
1" i.e. DN25	68.4

c) Female pipe threads:

- ISO 7-1/ ISO 228-1:	ANSI:
Rp1/2" resp. G1/2"	NPT 1/2"
Rp3/4" resp. G3/4"	NPT 3/4"
Rp1" resp. G1"	NPT 1"

*4) act position relative to the indication rail according to specification no. 20010501!

- all indicated dimension in "mm"!

All dimensions only available on

VLI's in standard execution!

Modifications reserved.

Purchase Order Data:

Company:

Purchase order no.:

Project:

Quantity:

Tag no.:	

Operating Conditions:

Fluid:

Density:

Operating pressure:

Design pressure:

Operating temperature:

Design temperature:

> 0.41g/cm3	g/cm3:
max. 66.2bar(g) @ 20 °C *1)	bar(g):
"	bar(g):
-80 °C bis max. 400 °C *1)	°C:
"	°C:

*1) Notice max. pressure-temperature rating! Lower temperature down to -162°C on request

Lower pressure-temperature rating of any connecting flanges or fittings reserved!

Test pressure will be specified according to WEKA specification "Pressure- and Temperature Information"

Design and Materials:

Used pressure design rules:

Float chamber:

Float:

Stud bolt / Heavy hex nut:

Spiral wound gasket:

standard execution:

ANSI/ASME B31.3 - Chemical Plant & Petroleum Refinery Piping

316/316L double certified incl. NACE MR0175

seamless pipe sch10S A-312, seamless butt weld fittings A-403

forged wn-flanges and blinds A-182

Ti-alloy

type no.:

A-193 B8 Cl. 2 / A194 Grade 8, incl. NACE MR0175

Profil SpV2, outside centering ring in ss316

- plies ss316L wounded with PTFE, T<=200°C

Standard

- plies ss316L wounded with Graphit, T<=400°C

Indication Rail:

PC, cat.-no. 990805:

Al, cat.-no. 20010405:

Stand. Flaps: Red-Al nature

No.: 34837

Standard

Colour. flaps:

No.:

Colour. flaps:

No.:

Connecting Distance "L":

Max. 6000mm (one-piece design)

mm:

Standard Connections:

Butt weld ends

O.D.*w.t. in mm:

Flanged DN.../PN100 resp. class600:

NPT female thread

size:

Type and size to be advised in case of order! Note standard dimension available as indicated!

Other Connections:

--	--

Accessories:

Fixation bracket no. 26936:

dimension "A", mm:

Magnetic switch *4):

type:

quantity:

Transmitter *4):

type:

signal output:

measuring length:

Control unit:

type:

supply voltage, V:

AC/DC:

Further accessories:

--	--

Optional:

Proofing of used materials according to EN10204-3.1B for float chamber:

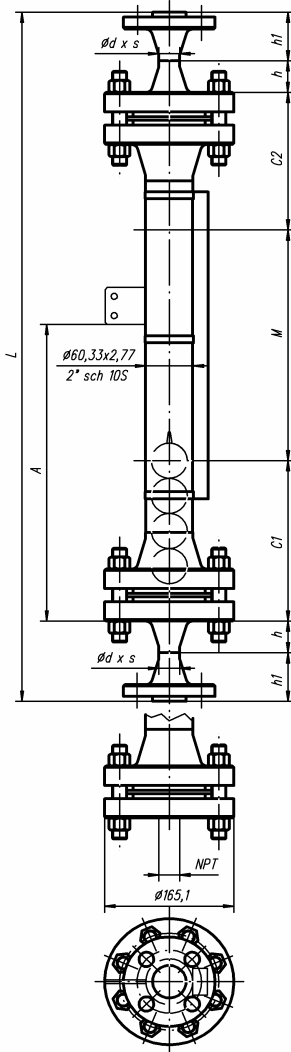
Heavy fixation for indication rail, specification no. 20010407 (vibrations, shock etc.)

Special Executions, Notes:

--	--

Petro 68

Type: 39068-B



Float extension lower / upper:

	c1:	c2:
Standard:	220	180
On request:	c1, c2 shorter or longer, depending on float!	

Standard Connections:

- a) Butt weld ends, sch10S:

size	d*s	h
1/2" i.e. DN15	21.34*2.11	38.1
3/4" i.e. DN20	26.67*2.11	41.5
1" i.e. DN25	33.40*2.77	44.5
- b) Flanged, ANSI B16.5:

	h1
- PN100 resp. class600	
1/2" i.e. DN15	58.7
3/4" i.e. DN20	63.6
1" i.e. DN25	68.4
- c) Female pipe threads:

	ANSI:
- ISO 7-1/ ISO 228-1:	
Rp1/2" resp. G1/2"	NPT 1/2"
Rp3/4" resp. G3/4"	NPT 3/4"
Rp1" resp. G1"	NPT 1"

*4) act position relative to the indication rail according to specification no. 20010501!

- all indicated dimension in "mm"!
 All dimensions only available on VLI's in standard execution!
 Modifications reserved.

Purchase Order Data:

Company: _____
 Purchase order no.: _____
 Project: _____
 Quantity: _____ Tag no.: _____

Operating Conditions:

Fluid: _____
 Density: > 0.41g/cm3 g/cm3: _____
 Operating pressure: max. 66.2bar(g) @ 20 °C *1) bar(g): _____
 Design pressure: " bar(g): _____
 Operating temperature: -80 °C bis max. 400 °C *1) °C: _____
 Design temperature: " °C: _____

*1) Notice max. pressure-temperature rating! Lower temperature down to -162°C on request
 Lower pressure-temperature rating of any connecting flanges or fittings reserved!
 Test pressure will be specified according to WEKA specification "Pressure- and Temperature Information"

Design and Materials:

standard execution:
 Used pressure design rules: ANSI/ASME B31.3 - Chemical Plant & Petroleum Refinery Piping
 Float chamber: 316/316L double certified incl. NACE MR0175
 seamless pipe sch10S A-312, seamless butt weld fittings A-403
 forged wn-flanges and blinds A-182
 Float: Ti-alloy type no.: _____
 Stud bolt / Heavy hex nut: A-193 B8 Cl. 2 / A194 Grade 8, incl. NACE MR0175
 Spiral wound gasket: Profil SpV2, outside centering ring in ss316
 - plies ss316L wounded with PTFE, T<=200°C Standard
 - plies ss316L wounded with Graphit, T<=400°C

Indication Rail:

PC, cat.-no. 990805: Stand. Flaps: Red-Al nature No.: 34837 Standard
 Colour. flaps: _____ No.: _____
 Al, cat.-no. 20010405: Colour. flaps: _____ No.: _____

Connecting Distance "L":

Max. 6000mm (one-piece design) mm: _____

Standard Connections:

Butt weld ends O.D.*w.t. in mm: _____
 Flanged DN.../PN100 resp. class600: _____
 NPT female thread size: _____

Type and size to be advised in case of order! Note standard dimension available as indicated!

Other Connections:

Accessories:

Fixation bracket no. 26936: dimension "A", mm: _____

Magnetic switch *4):

type: _____ quantity: _____

Transmitter *4):

type: _____
 signal output: _____
 measuring length: _____
 type: _____
 supply voltage, V: _____ AC/DC: _____

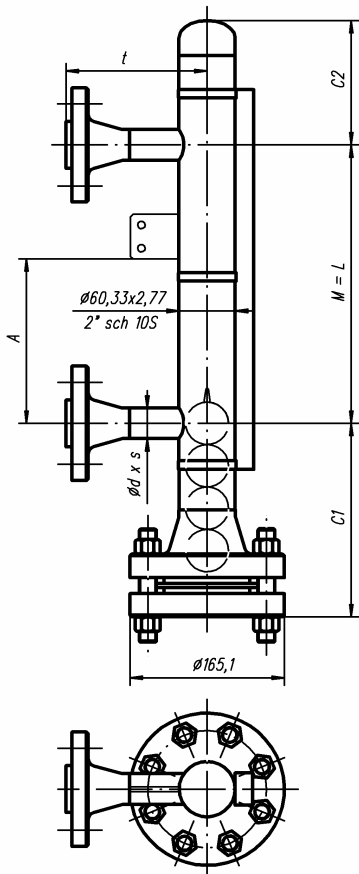
Control unit:

Further accessories:

Optional:

Proofing of used materials according to EN10204-3.1B for float chamber:
 Heavy fixation for indication rail, specification no. 20010407 (vibrations, shock etc.)

Special Executions, Notes:



Purchase Order Data:

Company:
 Purchase order no.:
 Project:
 Quantity: Tag no.:

Operating Conditions:

Fluid:
 Density: > 0.41g/cm3 g/cm3:
 Operating pressure: max. 66.2bar(g) @ 20 °C *1) bar(g):
 Design pressure: " bar(g):
 Operating temperature: -80 °C bis max. 400 °C *1) °C:
 Design temperature: " °C:

*1) Notice max. pressure-temperature rating! Lower temperature down to -162°C on request
 Lower pressure-temperature rating of any connecting flanges or fittings reserved!
 Test pressure will be specified according to WEKA specification "Pressure- and Temperature Information"

Design and Materials:

standard execution:
 Used pressure design rules: ANSI/ASME B31.3 - Chemical Plant & Petroleum Refinery Piping
 Float chamber: 316/316L double certified incl. NACE MR0175
 seamless pipe sch10S A-312, seamless butt weld fittings A-403
 forged wn-flanges and blinds A-182
 Float: Ti-alloy type no.:
 Stud bolt / Heavy hex nut: A-193 B8 Cl. 2 / A194 Grade 8, incl. NACE MR0175
 Spiral wound gasket: Profil SpV2, outside centering ring in ss316
 - plies ss316L wounded with PTFE, T<=200 °C Standard
 - plies ss316L wounded with Graphit, T<=400 °C

Indication Rail:

PC, cat.-no. 990805: Stand. Flaps: Red-Al nature No.: 34837 Standard
 Colour. flaps: No.:
 Al, cat.-no. 20010405: Colour. flaps: No.:

Connecting Distance "L":

Max. 6000mm (one-piece design) mm:

Standard Connections:

Butt weld ends O.D.*w.t. in mm:
 Flanged DN.../PN100 resp. class600:
 NPT female thread size:

Type and size to be advised in case of order! Note standard dimension available as indicated!

Other Connections:

Float extension lower / upper:

	c1:	c2:
Standard:	220	150

On request: c1, c2 shorter or longer, depending on float!

Standard Flange Connections:

a) Connection branches, sch10S:

- PN50 resp. class300

size	t	d*s
1/2" i.e. DN15	150	21.34*2.11
3/4" i.e. DN20	150	26.67*2.11
1" i.e. DN25	150	33.40*2.77
>=1 1/4" i.e. DN32 *2)	tba *3)	33.40*2.77

Accessories:

Fixation bracket no. 26936: dimension "A", mm:

Magnetic switch *4):

type: quantity:

Transmitter *4):

type:
 signal output:
 measuring length:
 type:
 supply voltage, V: AC/DC:

Control unit:

Further accessories:

Optional:

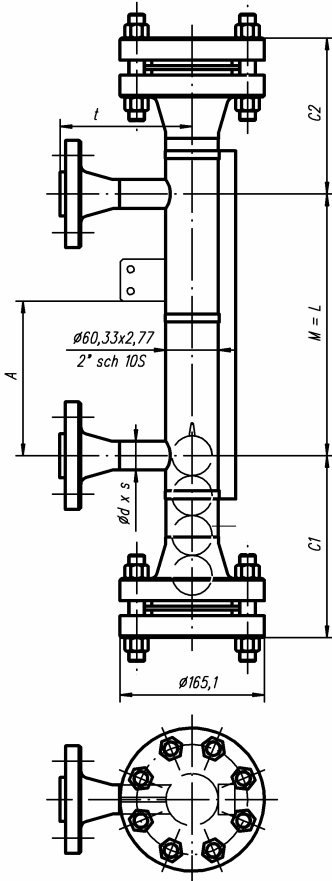
Proofing of used materials according to EN10204-3.1B for float chamber:
 Heavy fixation for indication rail, specification no. 20010407 (vibrations, shock etc.)

Special Executions, Notes:

*2) i.e. with reduction flanges
 *3) depending on size of connecting flanges
 *4) act position relative to the indication rail according to specification no. 20010501!
 - all indicated dimension in "mm"
 All dimensions only available on VLI's in standard execution!
 Modifications reserved.

Petro 68

Type: 39068-O



Purchase Order Data:

Company: _____
 Purchase order no.: _____
 Project: _____
 Quantity: _____ Tag no.: _____

Operating Conditions:

Fluid: _____
 Density: > 0.41g/cm3 g/cm3: _____
 Operating pressure: max. 66.2bar(g) @ 20 °C *1) bar(g): _____
 Design pressure: " bar(g): _____
 Operating temperature: -80 °C bis max. 400 °C *1) °C: _____
 Design temperature: " °C: _____

*1) Notice max. pressure-temperature rating! Lower temperature down to -162°C on request
 Lower pressure-temperature rating of any connecting flanges or fittings reserved!
 Test pressure will be specified according to WEKA specification "Pressure- and Temperature Information"

Design and Materials:

standard execution:
 Used pressure design rules: ANSI/ASME B31.3 - Chemical Plant & Petroleum Refinery Piping
 Float chamber: 316/316L double certified incl. NACE MR0175
 seamless pipe sch10S A-312, seamless butt weld fittings A-403
 forged wn-flanges and blinds A-182
 Float: Ti-alloy type no.: _____
 Stud bolt / Heavy hex nut: A-193 B8 Cl. 2 / A194 Grade 8, incl. NACE MR0175
 Spiral wound gasket: Profil SpV2, outside centering ring in ss316
 - plies ss316L wounded with PTFE, T<=200 °C Standard
 - plies ss316L wounded with Graphit, T<=400 °C

Indication Rail:

PC, cat.-no. 990805: Stand. Flaps: Red-Al nature No.: 34837 Standard
 Colour. flaps: _____ No.: _____
 Al, cat.-no. 20010405: Colour. flaps: _____ No.: _____

Connecting Distance "L":

Max. 6000mm (one-piece design) mm: _____

Standard Connections:

Butt weld ends O.D.*w.t. in mm: _____
 Flanged DN.../PN100 resp. class600: _____
 NPT female thread size: _____

Type and size to be advised in case of order! Note standard dimension available as indicated!

Other Connections:

Float extension lower / upper:

	c1:	c2:
Standard:	220	180

On request: c1, c2 shorter or longer, depending on float!

Standard Flange Connections:

a) Connection branches, sch10S:

- PN50 resp. class300

size	t	d*s
1/2" i.e. DN15	150	21.34*2.11
3/4" i.e. DN20	150	26.67*2.11
1" i.e. DN25	150	33.40*2.77
>=1 1/4" i.e. DN32 *2)	tba *3)	33.40*2.77

Accessories:

Fixation bracket no. 26936: dimension "A", mm: _____

Magnetic switch *4):

type: _____ quantity: _____

Transmitter *4):

type: _____
 signal output: _____
 measuring length: _____
 type: _____
 supply voltage, V: _____ AC/DC: _____

Control unit:

Further accessories:

Optional:

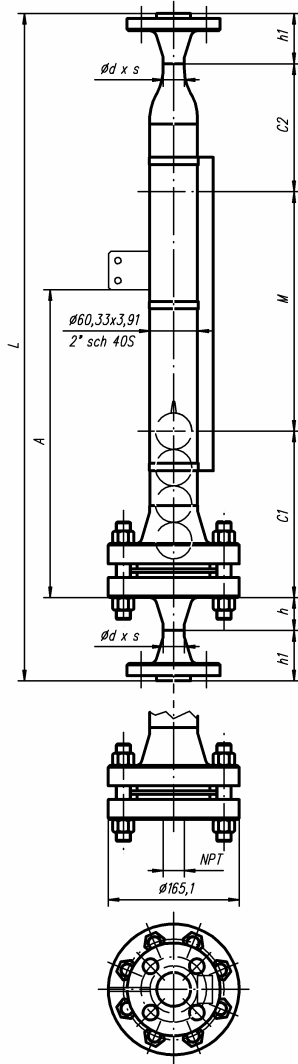
Proofing of used materials according to EN10204-3.1B for float chamber:
 Heavy fixation for indication rail, specification no. 20010407 (vibrations, shock etc.)

Special Executions, Notes:

*2) i.e. with reduction flanges
 *3) depending on size of connecting flanges
 *4) act position relative to the indication rail according to specification no. 20010501!
 - all indicated dimension in "mm"!
 All dimensions only available on VLI's in standard execution!
 Modifications reserved.

Petro 100

Type: 39100-A



Float extension lower / upper:

	c1:	c2:
Standard:	220	170
On request:	c1, c2 shorter or longer, depending on float!	

Standard Connections:

- a) Butt weld ends, sch40S:

size	d*s	h
1/2" i.e. DN15	21.34*2.77	38.1
3/4" i.e. DN20	26.67*2.87	41.5
1" i.e. DN25	33.40*3.38	44.5
- b) Flanged, ANSI B16.5:

	h1
1/2" i.e. DN15	58.7
3/4" i.e. DN20	63.6
1" i.e. DN25	68.4
- c) Female pipe threads:

	ANSI:
- ISO 7-1/ ISO 228-1:	
Rp1/2" resp. G1/2"	NPT 1/2"
Rp3/4" resp. G3/4"	NPT 3/4"
Rp1" resp. G1"	NPT 1"

*4) act position relative to the indication rail according to specification no. 20010501!

- all indicated dimension in "mm"!
All dimensions only available on VLI's in standard execution!
Modifications reserved.

Purchase Order Data:

Company: _____
 Purchase order no.: _____
 Project: _____
 Quantity: _____ Tag no.: _____

Operating Conditions:

Fluid: _____
 Density: > 0.41g/cm3 g/cm3: _____
 Operating pressure: max. 98.6bar(g) @ 20 °C *1) bar(g): _____
 Design pressure: " bar(g): _____
 Operating temperature: -80 °C bis max. 400 °C *1) °C: _____
 Design temperature: " °C: _____

*1) Notice max. pressure-temperature rating! Lower temperature down to -162°C on request
 Lower pressure-temperature rating of any connecting flanges or fittings reserved!
 Test pressure will be specified according to WEKA specification "Pressure- and Temperature Information"

Design and Materials:

standard execution:
 Used pressure design rules: ANSI/ASME B31.3 - Chemical Plant & Petroleum Refinery Piping
 Float chamber: 316/316L double certified incl. NACE MR0175
 seamless pipe sch40S A-312, seamless butt weld fittings A-403
 forged wn-flanges and blinds A-182
 Float: Ti-alloy type no.: _____
 Stud bolt / Heavy hex nut: A-193 B8 Cl. 2 / A194 Grade 8, incl. NACE MR0175
 Spiral wound gasket: Profil SpV2, outside centering ring in ss316
 - plies ss316L wounded with PTFE, T<=200°C Standard
 - plies ss316L wounded with Graphit, T<=400°C

Indication Rail:

PC, cat.-no. 990805: Stand. Flaps: Red-Al nature No.: 34837 Standard
 Colour. flaps: _____ No.: _____
 Al, cat.-no. 20010405: Colour. flaps: _____ No.: _____

Connecting Distance "L":

Max. 6000mm (one-piece design) mm: _____

Standard Connections:

Butt weld ends O.D.*w.t. in mm: _____
 Flanged DN.../PN100 resp. class600: _____
 NPT female thread size: _____

Type and size to be advised in case of order! Note standard dimension available as indicated!

Other Connections:

Accessories:

Fixation bracket no. 26936: dimension "A", mm: _____

Magnetic switch *4):

type: _____ quantity: _____

Transmitter *4):

type: _____
 signal output: _____
 measuring length: _____
 type: _____
 supply voltage, V: _____ AC/DC: _____

Further accessories:

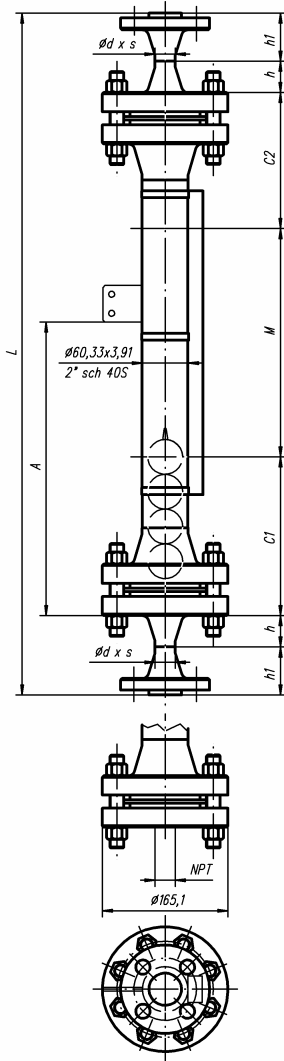
Optional:

Proofing of used materials according to EN10204-3.1B for float chamber:
 Heavy fixation for indication rail, specification no. 20010407 (vibrations, shock etc.)

Special Executions, Notes:

Petro 100

Type: 39100-B



Float extension lower / upper:

	c1:	c2:
Standard:	220	180
On request:	c1, c2 shorter or longer, depending on float!	

Standard Connections:

- a) Butt weld ends, sch40S:

size	d*s	h
1/2" i.e. DN15	21.34*2.77	38.1
3/4" i.e. DN20	26.67*2.87	41.5
1" i.e. DN25	33.40*3.38	44.5
- b) Flanged, ANSI B16.5:

	h1
- PN100 resp. class600	
1/2" i.e. DN15	58.7
3/4" i.e. DN20	63.6
1" i.e. DN25	68.4
- c) Female pipe threads:

	ANSI:
- ISO 7-1/ ISO 228-1:	
Rp1/2" resp. G1/2"	NPT 1/2"
Rp3/4" resp. G3/4"	NPT 3/4"
Rp1" resp. G1"	NPT 1"

*4) act position relative to the indication rail according to specification no. 20010501!

- all indicated dimension in "mm"!
 All dimensions only available on VLI's in standard execution!
 Modifications reserved.

Purchase Order Data:

Company:
 Purchase order no.:
 Project:
 Quantity: Tag no.:

Operating Conditions:

Fluid:
 Density: > 0.41g/cm3 g/cm3:
 Operating pressure: max. 98.6bar(g) @ 20 °C *1) bar(g):
 Design pressure: " bar(g):
 Operating temperature: -80 °C bis max. 400 °C *1) °C:
 Design temperature: " °C:

*1) Notice max. pressure-temperature rating! Lower temperature down to -162°C on request
 Lower pressure-temperature rating of any connecting flanges or fittings reserved!
 Test pressure will be specified according to WEKA specification "Pressure- and Temperature Information"

Design and Materials:

standard execution:
 Used pressure design rules: ANSI/ASME B31.3 - Chemical Plant & Petroleum Refinery Piping
 Float chamber: 316/316L double certified incl. NACE MR0175
 seamless pipe sch40S A-312, seamless butt weld fittings A-403
 forged wn-flanges and blinds A-182
 Float: Ti-alloy type no.:
 Stud bolt / Heavy hex nut: A-193 B8 Cl. 2 / A194 Grade 8, incl. NACE MR0175
 Spiral wound gasket: Profil SpV2, outside centering ring in ss316
 - plies ss316L wounded with PTFE, T<=200°C Standard
 - plies ss316L wounded with Graphit, T<=400°C

Indication Rail:

PC, cat.-no. 990805: Stand. Flaps: Red-Al nature No.: 34837 Standard
 Colour. flaps: No.:
 Al, cat.-no. 20010405: Colour. flaps: No.:

Connecting Distance "L":

Max. 6000mm (one-piece design) mm:

Standard Connections:

Butt weld ends O.D.*w.t. in mm:
 Flanged DN.../PN100 resp. class600:
 NPT female thread size:

Type and size to be advised in case of order! Note standard dimension available as indicated!

Other Connections:

Accessories:

Fixation bracket no. 26936: dimension "A", mm:

Magnetic switch *4):

type: quantity:

Transmitter *4):

type:
 signal output:
 measuring length:
 Control unit: type:
 supply voltage, V: AC/DC:

Further accessories:

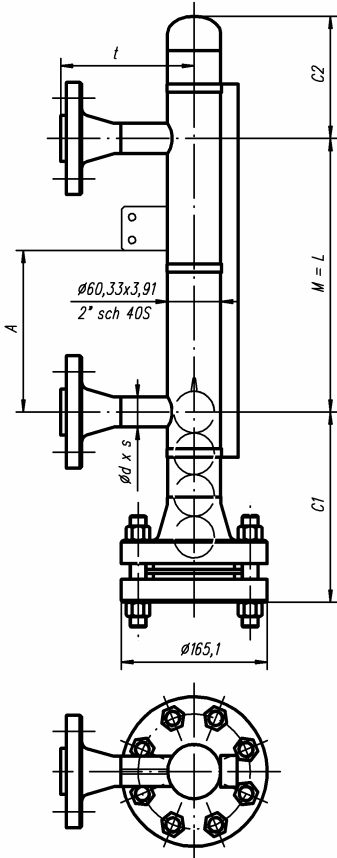
Optional:

Proofing of used materials according to EN10204-3.1B for float chamber:
 Heavy fixation for indication rail, specification no. 20010407 (vibrations, shock etc.)

Special Executions, Notes:

Petro 100

Type: 39100-K



Purchase Order Data:

Company:
 Purchase order no.:
 Project:
 Quantity: Tag no.:

Operating Conditions:

Fluid:
 Density: > 0.41g/cm3 g/cm3:
 Operating pressure: max. 98.6bar(g) @ 20 °C *1) bar(g):
 Design pressure: " bar(g):
 Operating temperature: -80 °C bis max. 400 °C *1) °C:
 Design temperature: " °C:

*1) Notice max. pressure-temperature rating! Lower temperature down to -162°C on request
 Lower pressure-temperature rating of any connecting flanges or fittings reserved!
 Test pressure will be specified according to WEKA specification "Pressure- and Temperature Information"

Design and Materials:

standard execution:
 Used pressure design rules: ANSI/ASME B31.3 - Chemical Plant & Petroleum Refinery Piping
 Float chamber: 316/316L double certified incl. NACE MR0175
 seamless pipe sch40S A-312, seamless butt weld fittings A-403
 forged wn-flanges and blinds A-182
 Float: Ti-alloy type no.:
 Stud bolt / Heavy hex nut: A-193 B8 Cl. 2 / A194 Grade 8, incl. NACE MR0175
 Spiral wound gasket: Profil SpV2, outside centering ring in ss316
 - plies ss316L wounded with PTFE, T<=200 °C Standard
 - plies ss316L wounded with Graphit, T<=400 °C

Indication Rail:

PC, cat.-no. 990805: Stand. Flaps: Red-Al nature No.: 34837 Standard
 Colour. flaps: No.:
 Al, cat.-no. 20010405: Colour. flaps: No.:

Connecting Distance "L":

Max. 6000mm (one-piece design) mm:

Standard Connections:

Butt weld ends O.D.*w.t. in mm:
 Flanged DN.../PN100 resp. class600:
 NPT female thread size:

Type and size to be advised in case of order! Note standard dimension available as indicated!

Other Connections:

Float extension lower / upper:

	c1:	c2:
Standard:	220	150

On request: c1, c2 shorter or longer, depending on float!

Standard Flange Connections:

a) Connection branches, sch40S:

- PN100 resp. class600

size	t	d*s
1/2" i.e. DN15	150	21.34*2.77
3/4" i.e. DN20	150	26.67*2.87
1" i.e. DN25	150	33.40*3.38
>=1 1/4" i.e. DN32 *2)	tba *3)	33.40*3.38

Accessories:

Fixation bracket no. 26936: dimension "A", mm:

Magnetic switch *4):

type: quantity:

Transmitter *4):

type:
 signal output:
 measuring length:
 type:
 supply voltage, V: AC/DC:

Control unit:

Further accessories:

Optional:

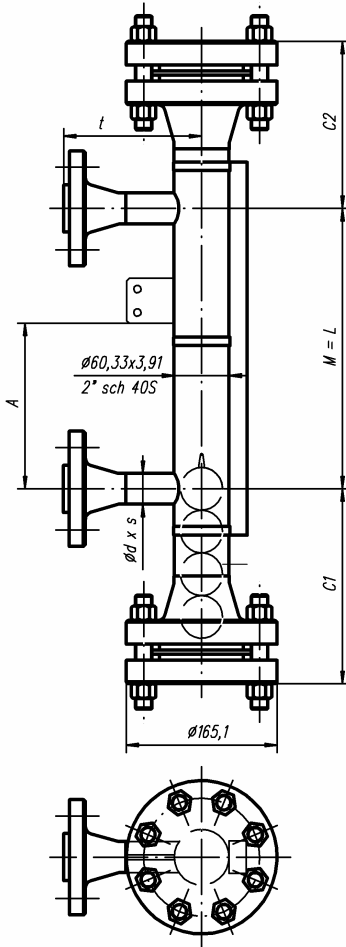
Proofing of used materials according to EN10204-3.1B for float chamber:
 Heavy fixation for indication rail, specification no. 20010407 (vibrations, shock etc.)

Special Executions, Notes:

*2) i.e. with reduction flanges
 *3) depending on size of connecting flanges
 *4) act position relative to the indication rail according to specification no. 20010501!
 - all indicated dimension in "mm"!
 All dimensions only available on VLI's in standard execution!
 Modifications reserved.

Petro 100

Type: 39100-O



Purchase Order Data:

Company: _____
 Purchase order no.: _____
 Project: _____
 Quantity: _____ Tag no.: _____

Operating Conditions:

Fluid: _____
 Density: > 0.41g/cm3 g/cm3: _____
 Operating pressure: max. 98.6bar(g) @ 20 °C *1) bar(g): _____
Design pressure: " bar(g): _____
 Operating temperature: -80 °C bis max. 400 °C *1) °C: _____
Design temperature: " °C: _____

*1) Notice max. pressure-temperature rating! Lower temperature down to -162°C on request
 Lower pressure-temperature rating of any connecting flanges or fittings reserved!
 Test pressure will be specified according to WEKA specification "Pressure- and Temperature Information"

Design and Materials:

standard execution:
 Used pressure design rules: ANSI/ASME B31.3 - Chemical Plant & Petroleum Refinery Piping
 Float chamber: 316/316L double certified incl. NACE MR0175
 seamless pipe sch40S A-312, seamless butt weld fittings A-403
 forged wn-flanges and blinds A-182
 Float: Ti-alloy type no.: _____
 Stud bolt / Heavy hex nut: A-193 B8 Cl. 2 / A194 Grade 8, incl. NACE MR0175
 Spiral wound gasket: Profil SpV2, outside centering ring in ss316
 - plies ss316L wounded with PTFE, T<=200 °C Standard
 - plies ss316L wounded with Graphit, T<=400 °C

Indication Rail:

PC, cat.-no. 990805: Stand. Flaps: Red-Al nature No.: 34837 Standard
 Colour. flaps: _____ No.: _____
 Al, cat.-no. 20010405: Colour. flaps: _____ No.: _____

Connecting Distance "L":

Max. 6000mm (one-piece design) mm: _____

Standard Connections:

Butt weld ends O.D.*w.t. in mm: _____
 Flanged DN.../PN100 resp. class600: _____
 NPT female thread size: _____

Type and size to be advised in case of order! Note standard dimension available as indicated!

Other Connections:

Float extension lower / upper:

	c1:	c2:
Standard:	220	180

On request: c1, c2 shorter or longer, depending on float!

Standard Flange Connections:

a) Connection branches, sch40S:

- PN100 resp. class600

size	t	d*s
1/2" i.e. DN15	150	21.34*2.77
3/4" i.e. DN20	150	26.67*2.87
1" i.e. DN25	150	33.40*3.38
>=1 1/4" i.e. DN32 *2)	tba *3)	33.40*3.38

Accessories:

Fixation bracket no. 26936: dimension "A", mm: _____

Magnetic switch *4):

type: _____ quantity: _____

Transmitter *4):

type: _____
 signal output: _____
 measuring length: _____
 type: _____
 supply voltage, V: _____ AC/DC: _____

Control unit:

Further accessories:

Optional:

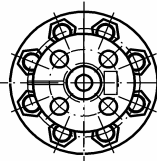
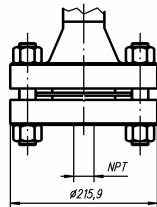
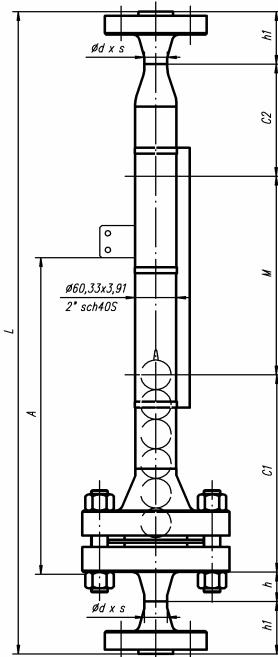
Proofing of used materials according to EN10204-3.1B for float chamber:
 Heavy fixation for indication rail, specification no. 20010407 (vibrations, shock etc.)

Special Executions, Notes:

*2) i.e. with reduction flanges
 *3) depending on size of connecting flanges
 *4) act position relative to the indication rail according to specification no. 20010501!
 - all indicated dimension in "mm"!
 All dimensions only available on VLI's in standard execution!
 Modifications reserved.

Petro 150

Type: 39150-A



Float extension lower / upper:

	c1:	c2:
Standard:	300	200
On request:	c1, c2 shorter or longer, depending on float!	

Standard Connections:

- a) Butt weld ends, sch40S:

size	d*s	h
1/2" i.e. DN15	21.34*2.77	38.1
3/4" i.e. DN20	26.67*2.87	41.5
1" i.e. DN25	33.40*3.38	44.5
- b) Flanged, ANSI B16.5:

	h1
- PN150 resp. class900	h1
1/2" i.e. DN15	58.7
3/4" i.e. DN20	63.6
1" i.e. DN25	68.4
- c) Female pipe threads:

	ANSI:
- ISO 7-1/ ISO 228-1:	ANSI:
Rp1/2" resp. G1/2"	NPT 1/2"
Rp3/4" resp. G3/4"	NPT 3/4"
Rp1" resp. G1"	NPT 1"

*4) act position relative to the indication rail according to specification no. 20010501!
 - all indicated dimension in "mm"!
 All dimensions only available on VLI's in standard execution!
 Modifications reserved.

Purchase Order Data:

Company: _____
 Purchase order no.: _____
 Project: _____
 Quantity: _____ Tag no.: _____

Operating Conditions:

Fluid: _____
 Density: > 0.47g/cm3 g/cm3: _____
 Operating pressure: max. 148.9bar(g) @ 20 °C *1) bar(g): _____
 Design pressure: " bar(g): _____
 Operating temperature: -80 °C bis max. 400 °C *1) °C: _____
 Design temperature: " °C: _____

*1) Notice max. pressure-temperature rating! Lower temperature down to -162°C on request
 Lower pressure-temperature rating of any connecting flanges or fittings reserved!
 Test pressure will be specified according to WEKA specification "Pressure- and Temperature Information"

Design and Materials:

standard execution:
 Used pressure design rules: ANSI/ASME B31.3 - Chemical Plant & Petroleum Refinery Piping
 Float chamber: 316/316L double certified incl. NACE MR0175
 seamless pipe sch40S A-312, seamless butt weld fittings A-403
 forged wn-flanges and blinds A-182
 Float: Ti-alloy type no.: _____
 Stud bolt / Heavy hex nut: A-193 B8 Cl. 2 / A194 Grade 8, incl. NACE MR0175
 Spiral wound gasket: Profil SpV2, outside centering ring in ss316
 - plies ss316L wounded with PTFE, T<=200°C Standard
 - plies ss316L wounded with Graphit, T<=400°C

Indication Rail:

PC, cat.-no. 990805: Stand. Flaps: Red-Al nature No.: 34837 Standard
 Colour. flaps: _____ No.: _____
 Al, cat.-no. 20010405: Colour. flaps: _____ No.: _____

Connecting Distance "L":

Max. 6000mm (one-piece design) mm: _____

Standard Connections:

Butt weld ends O.D.*w.t. in mm: _____
 Flanged DN.../PN150 resp. class900: _____
 NPT female thread size: _____

Type and size to be advised in case of order! Note standard dimension available as indicated!

Other Connections:

Accessories:

Fixation bracket no. 26936: dimension "A", mm: _____

Magnetic switch *4):

type: _____ quantity: _____

Transmitter *4):

type: _____
 signal output: _____
 measuring length: _____

Control unit:

type: _____
 supply voltage, V: _____ AC/DC: _____

Further accessories:

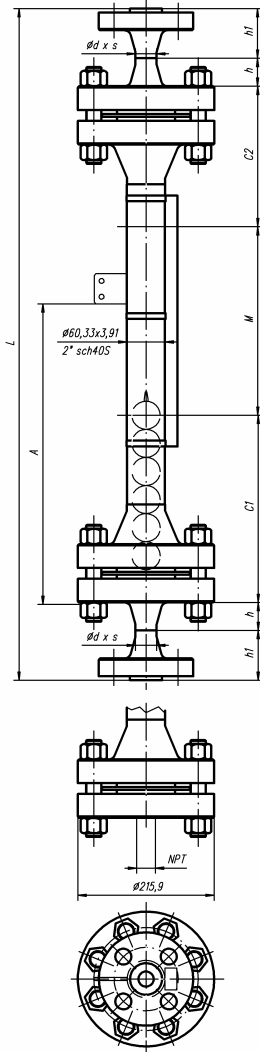
Optional:

Proofing of used materials according to EN10204-3.1B for float chamber:
 Heavy fixation for indication rail, specification no. 20010407 (vibrations, shock etc.)

Special Executions, Notes:

Petro 150

Type: 39150-B



Float extension lower / upper:

	c1:	c2:
Standard:	300	220

On request: c1, c2 shorter or longer, depending on float!

Standard Connections:

- a) Butt weld ends, sch40S:

size	d*s	h
1/2" i.e. DN15	21.34*2.77	38.1
3/4" i.e. DN20	26.67*2.87	41.5
1" i.e. DN25	33.40*3.38	44.5
- b) Flanged, ANSI B16.5:

	h1
- PN150 resp. class900	h1
1/2" i.e. DN15	58.7
3/4" i.e. DN20	63.6
1" i.e. DN25	68.4
- c) Female pipe threads:

	ANSI:
- ISO 7-1/ ISO 228-1:	ANSI:
Rp1/2" resp. G1/2"	NPT 1/2"
Rp3/4" resp. G3/4"	NPT 3/4"
Rp1" resp. G1"	NPT 1"

*4) act position relative to the indication rail according to specification no. 20010501!

- all indicated dimension in "mm"!

All dimensions only available on VLI's in standard execution!

Modifications reserved.

Purchase Order Data:

Company: _____
 Purchase order no.: _____
 Project: _____
 Quantity: _____ Tag no.: _____

Operating Conditions:

Fluid: _____
 Density: > 0.47g/cm3 g/cm3: _____
 Operating pressure: max. 148.9bar(g) @ 20 °C *1) bar(g): _____
 Design pressure: " bar(g): _____
 Operating temperature: -80 °C bis max. 400 °C *1) °C: _____
 Design temperature: " °C: _____

*1) Notice max. pressure-temperature rating! Lower temperature down to -162°C on request
 Lower pressure-temperature rating of any connecting flanges or fittings reserved!
 Test pressure will be specified according to WEKA specification "Pressure- and Temperature Information"

Design and Materials:

standard execution:
 Used pressure design rules: ANSI/ASME B31.3 - Chemical Plant & Petroleum Refinery Piping
 Float chamber: 316/316L double certified incl. NACE MR0175
 seamless pipe sch40S A-312, seamless butt weld fittings A-403
 forged wn-flanges and blinds A-182
 Float: Ti-alloy type no.: _____
 Stud bolt / Heavy hex nut: A-193 B8 Cl. 2 / A194 Grade 8, incl. NACE MR0175
 Spiral wound gasket: Profil SpV2, outside centering ring in ss316
 - plies ss316L wounded with PTFE, T<=200°C Standard
 - plies ss316L wounded with Graphit, T<=400°C

Indication Rail:

PC, cat.-no. 990805: Stand. Flaps: Red-Al nature No.: 34837 Standard
 Colour. flaps: _____ No.: _____
 Al, cat.-no. 20010405: Colour. flaps: _____ No.: _____

Connecting Distance "L":

Max. 6000mm (one-piece design) mm: _____

Standard Connections:

Butt weld ends O.D.*w.t. in mm: _____
 Flanged DN.../PN150 resp. class900: _____
 NPT female thread size: _____

Type and size to be advised in case of order! Note standard dimension available as indicated!

Other Connections:

Accessories:

Fixation bracket no. 26936: dimension "A", mm: _____

Magnetic switch *4):

type: _____ quantity: _____

Transmitter *4):

type: _____
 signal output: _____
 measuring length: _____

Control unit:

type: _____
 supply voltage, V: _____ AC/DC: _____

Further accessories:

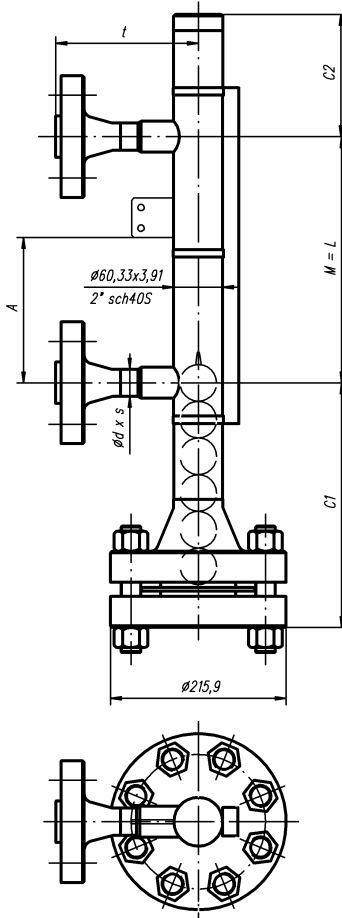
Optional:

Proofing of used materials according to EN10204-3.1B for float chamber:
 Heavy fixation for indication rail, specification no. 20010407 (vibrations, shock etc.)

Special Executions, Notes:

Petro 150

Type: 39150-K



Purchase Order Data:

Company: _____
 Purchase order no.: _____
 Project: _____
 Quantity: _____ Tag no.: _____

Operating Conditions:

Fluid: _____
 Density: > 0.47g/cm3 g/cm3: _____
 Operating pressure: max. 148.9bar(g) @ 20 °C *1) bar(g): _____
 Design pressure: " bar(g): _____
 Operating temperature: -80 °C bis max. 400 °C *1) °C: _____
 Design temperature: " °C: _____

*1) Notice max. pressure-temperature rating! Lower temperature down to -162°C on request
 Lower pressure-temperature rating of any connecting flanges or fittings reserved!
 Test pressure will be specified according to WEKA specification "Pressure- and Temperature Information"

Design and Materials:

standard execution:
 Used pressure design rules: ANSI/ASME B31.3 - Chemical Plant & Petroleum Refinery Piping
 Float chamber: 316/316L double certified incl. NACE MR0175
 seamless pipe sch40S A-312, seamless butt weld fittings A-403
 forged wn-flanges and blinds A-182
 Float: Ti-alloy type no.: _____
 Stud bolt / Heavy hex nut: A-193 B8 Cl. 2 / A194 Grade 8, incl. NACE MR0175
 Spiral wound gasket: Profil SpV2, outside centering ring in ss316
 - plies ss316L wounded with PTFE, T<=200 °C Standard
 - plies ss316L wounded with Graphit, T<=400 °C

Indication Rail:

PC, cat.-no. 990805: Stand. Flaps: Red-Al nature No.: 34837 Standard
 Colour. flaps: _____ No.: _____
 Al, cat.-no. 20010405: Colour. flaps: _____ No.: _____

Connecting Distance "L":

Max. 6000mm (one-piece design) mm: _____

Standard Connections:

Butt weld ends O.D.*w.t. in mm: _____
 Flanged DN.../PN150 resp. class900: _____
 NPT female thread size: _____

Type and size to be advised in case of order! Note standard dimension available as indicated!

Other Connections:

Float extension lower / upper:

	c1:	c2:
Standard:	300	150

On request: c1, c2 shorter or longer, depending on float!

Standard Flange Connections:

a) Connection branches, sch40S:

- PN150 resp. class900

size	t	d*s
1/2" i.e. DN15	150	21.34*2.77
3/4" i.e. DN20	150	26.67*2.87
1" i.e. DN25	150	33.40*3.38
>=1 1/4" i.e. DN32 *2)	tba *3)	33.40*3.38

Accessories:

Fixation bracket no. 26936: dimension "A", mm: _____

Magnetic switch *4):

type: _____ quantity: _____

Transmitter *4):

type: _____
 signal output: _____
 measuring length: _____
 type: _____
 supply voltage, V: _____ AC/DC: _____

Control unit:

Further accessories:

Optional:

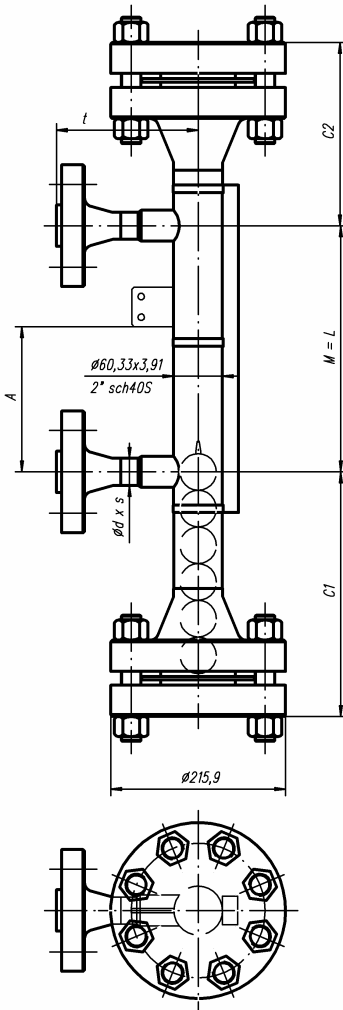
Proofing of used materials according to EN10204-3.1B for float chamber:
 Heavy fixation for indication rail, specification no. 20010407 (vibrations, shock etc.)

Special Executions, Notes:

*2) i.e. with reduction flanges
 *3) depending on size of connecting flanges
 *4) act position relative to the indication rail according to specification no. 20010501!
 - all indicated dimension in "mm"
 All dimensions only available on VLI's in standard execution!
 Modifications reserved.

Petro 150

Type: 39150-O



Purchase Order Data:

Company: _____
 Purchase order no.: _____
 Project: _____
 Quantity: _____ Tag no.: _____

Operating Conditions:

Fluid: _____
 Density: > 0.47g/cm3 g/cm3: _____
 Operating pressure: max. 148.9bar(g) @ 20 °C *1) bar(g): _____
Design pressure: " bar(g): _____
 Operating temperature: -80 °C bis max. 400 °C *1) °C: _____
Design temperature: " °C: _____

*1) Notice max. pressure-temperature rating! Lower temperature down to -162°C on request
 Lower pressure-temperature rating of any connecting flanges or fittings reserved!
 Test pressure will be specified according to WEKA specification "Pressure- and Temperature Information"

Design and Materials:

standard execution:
 Used pressure design rules: ANSI/ASME B31.3 - Chemical Plant & Petroleum Refinery Piping
 Float chamber: 316/316L double certified incl. NACE MR0175
 seamless pipe sch40S A-312, seamless butt weld fittings A-403
 forged wn-flanges and blinds A-182
 Float: Ti-alloy type no.: _____
 Stud bolt / Heavy hex nut: A-193 B8 Cl. 2 / A194 Grade 8, incl. NACE MR0175
 Spiral wound gasket: Profil SpV2, outside centering ring in ss316
 - plies ss316L wounded with PTFE, T<=200 °C Standard
 - plies ss316L wounded with Graphit, T<=400 °C

Indication Rail:

PC, cat.-no. 990805: Stand. Flaps: Red-Al nature No.: 34837 Standard
 Colour. flaps: _____ No.: _____
 Al, cat.-no. 20010405: Colour. flaps: _____ No.: _____

Connecting Distance "L":

Max. 6000mm (one-piece design) mm: _____

Standard Connections:

Butt weld ends O.D.*w.t. in mm: _____
 Flanged DN.../PN150 resp. class900: _____
 NPT female thread size: _____

Type and size to be advised in case of order! Note standard dimension available as indicated!

Other Connections:

Float extension lower / upper:

	c1:	c2:
Standard:	300	220

On request: c1, c2 shorter or longer, depending on float!

Standard Flange Connections:

a) Connection branches, sch40S:

- PN150 resp. class900

size	t	d*s
1/2" i.e. DN15	150	21.34*2.77
3/4" i.e. DN20	150	26.67*2.87
1" i.e. DN25	150	33.40*3.38
>=1 1/4" i.e. DN32 *2)	tba *3)	33.40*3.38

Accessories:

Fixation bracket no. 26936: dimension "A", mm: _____

Magnetic switch *4):

type: _____ quantity: _____

Transmitter *4):

type: _____
 signal output: _____
 measuring length: _____
 type: _____
 supply voltage, V: _____ AC/DC: _____

Control unit:

Further accessories:

Optional:

Proofing of used materials according to EN10204-3.1B for float chamber:
 Heavy fixation for indication rail, specification no. 20010407 (vibrations, shock etc.)

Special Executions, Notes:

*2) i.e. with reduction flanges
 *3) depending on size of connecting flanges
 *4) act position relative to the indication rail according to specification no. 20010501!
 - all indicated dimension in "mm"
 All dimensions only available on VLI's in standard execution!
 Modifications reserved.