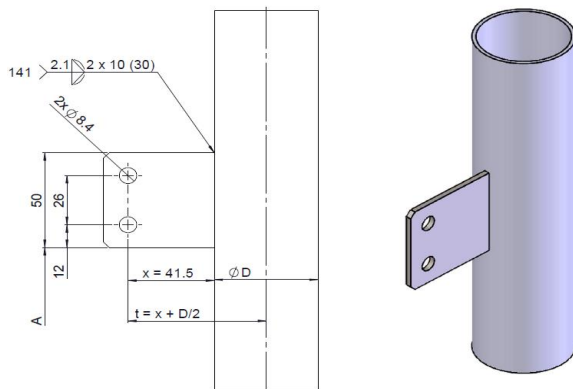


## Fixation bracket

### Fixation bracket welded ( WEKA-no. 26936 )



Thickness of bracket = 3mm

Measurement "D" [mm] depends on type of VLI

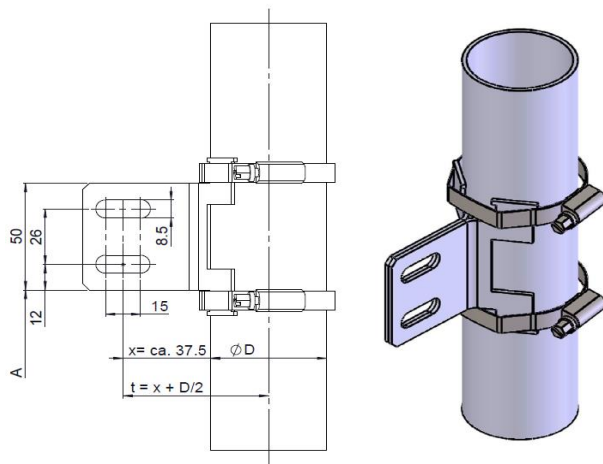
#### Description:

The fixation bracket is positioned at given length "A" and welded on. For more information on "A" refer to the VLI datasheets.

Two holes  $\varnothing 8.4$  are used for fixation with tank bracket.

For plastic VLI a fixation bracket is only available together with an armouring pipe.

### Fixation bracket flexible ( WEKA-no. 45143-1/-2 )



Thickness of bracket = 3mm

Measurement "D" [mm] depends on type of VLI

Flexible bracket Part-no.	Pipe - $\varnothing$	Hose clamps Part-no.	Tightening torque [Nm]
45143-1	>30 $\bar{o}$ 40mm	2 x 89249	2.5 $\bar{o}$ 3.5
45143-2	>40 $\bar{o}$ 80mm	2 x 89250	2.5 $\bar{o}$ 3.5

#### Description:

The fixation bracket is positioned at given length "A" and tightened with 2 hose clamps. For more information on "A" refer to the VLI datasheets.

The hose clamps can be loosened any time on site. This allows flexible height positioning at all times.

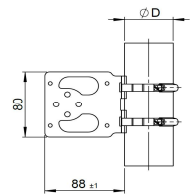
Two slot holes  $\varnothing 8.5$  and length of 15mm are used for easy fixation with tank bracket.

**WEKA recommends 1 fixation bracket every 2 meters for long level gauges.**

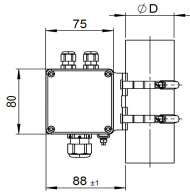
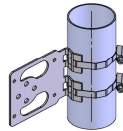
VLI-Line	VLI-Types	Outside- $\varnothing$ [mm]
Economy Line	34000E	33.70
	23614E	53.00
Smart Line	34000 & 34110	33.70
Standard Line	23614 & 34300	53.00
	32755	54.00
High Pressure Line	36800 & 26411	57.00
	25683 & 32806	60.30
Top op Tank Line SS	23013 & 25270/6 & 25270/28	53.00
	25270/50	54.00
all Plastics VLI-Line	-	63.00
	with an armouring pipe	68.00

## Mounting bracket

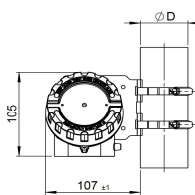
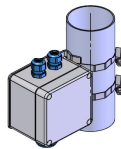
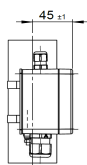
### Anbaukonsole für Klemmenkasten Typ K11 / XD-SDF4 ( WEKA-Nr.46307 )



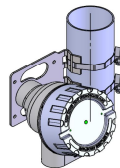
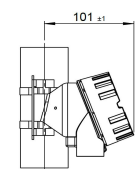
Thickness of the lug = 2mm



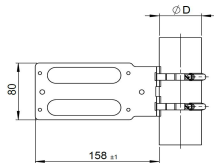
Mounting bracket 46307 with terminal box K11



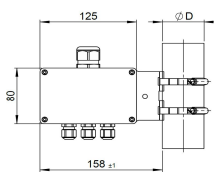
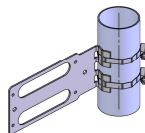
Mounting bracket 46307 with Ex d terminal box 86529



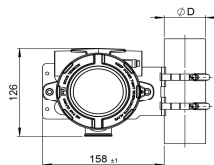
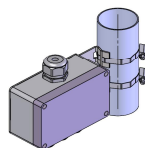
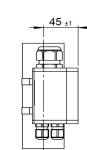
### Mounting bracket for terminal box type K21 / PR 7501 ( WEKA-No.46331 )



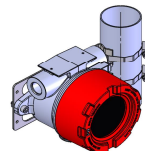
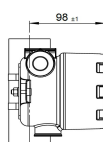
Thickness of the lug = 2mm



Mounting bracket 46331 with terminal box K21



Mounting bracket 46331 with HART temperature transmitter 88889

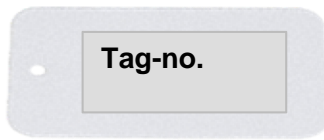


#### Fixation

Pipe - Ø	Hose clamps Part-no.	Tightening torque [Nm]
>30 ÷ 40mm	2 x 80648	2.5 ÷ 3.5
>40 ÷ 80mm	2 x 84043	2.5 ÷ 3.5

## Tag label

### Anhängeetikett



### Description:

Tag label, PVC, white, weatherproof, tearproof  
with tag number on label print  
size, 55 x 105 mm  
Font, black  
Font size, > 4 mm (depending on the number of characters)  
Attached with tag loop or cable tie or wire (SS) to VLI  
Temperature range: up to 60°C

Material number **40220**


### Nameplate carrier



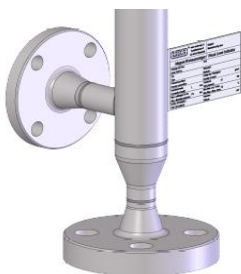
### Description:

(size, 85 x 80 mm)  
Font, black  
font size, > 6 mm (depending on number of characters)  
welded to VLI  
Temperature range: up to 400°C  
Tag number printed on nameplate

Material number **37714**

		® WEKA AG Schürlistrasse 8 CH-8344 Bäretswil - www.weka-ag.ch	
Autragsnr. Order no.	-	Material Material	-
Typ Type	-	L=	- mm
Max. zul. Druck (PS) Max. allowable pressure	- bar	Prüfdruck (PT) Test pressure	- bar
Dichte der Flüssigkeit Density of liquid	- g/cm <sup>3</sup>	Volumen (V) Volume	- dm <sup>3</sup>
Min. / max. zul. Temperatur (TS) Min. / max. allowable temperature			- / - °C
Kundenmaterial Customer material	-		Printed TT MM.YYYY HH MM
Tagnummer Tag no.	-		
		Baujahr Manuf. year	YYYY

### Nameplate, engraved



### Description:

Tag number engraved/lasered onto nameplate

(size, see type plate)  
Lettering, black or negative engraved  
font size, approx. 5 mm (depending on number of characters)  
welded to the VLI  
Temperature range: up to 400°C

Material number **37137**

		® www.weka-ag.ch Schürlistrasse 8 CH-8344 Bäretswil		Baujahr Manufacturing year	
<b>Magnet-Niveauanzeiger / Visual Level Indicator</b>					
Auftrags-Nr./Pos. Order No./Pos.		TAG <b>123456789</b>			
Typ Type		Werkstoff Material			
Prozessanschluss Process connection		Dichte der Flüssigkeit Density of liquid g/cm <sup>3</sup>			
Anschlussmass Connection length		L	mm	Testdruck Test pressure	PT bar
Max. zulässiger Druck Max. allowable pressure		PS	bar	Min./Max. zul. Temp. Min./Max. allow. temp.	TS °C
DGRL 2014/68/EU PED 2014/68/EU		*		Volumen Volume dm <sup>3</sup>	